

# BERGRIVIER MUNICIPALITY

WARD PLAN

WARD 5

2017 - 2022



## 7.5.1 PURPOSE

The Fourth Generation IDP (Chapter 4) has significant updated information on the demographic profile of the Bergrivier municipal area. This information forms the baseline to make informed decisions on the future of Bergrivier and therefore defining the vision. One of the most serious constraints currently in the drafting of an IDP is the lack of detailed information on a ward level. Most of the new information obtained, is only available on a municipal level. The problem is further exacerbated by the fact that ward boundaries are political boundaries and could potentially (and did, in preparation for the 2016 elections) change every 5 years.

For these reasons, the baseline information of ward plans will be the baseline information of the relevant local communities and rural areas. This information may at the time of approving the Fourth Generation IDP not be complete and will be updated continuously during the term of the IDP. A survey is currently in the final phase of completion and will enable the municipality to determine the estimated number of people and households in each ward. This will contribute to the development of a more reliable demographic profile for each ward.

However, to ensure a comparative analysis, the 2011-statistics (StatsSA) will form the base of an exercise to determine an estimated, projected demographic profile. The study undertaken by the Department of Agriculture in 2016 on households in the rural areas, will also be incorporated into a complete profile. It is therefore important to note that the ward plan is a collective of information of settlements/towns in the ward and the rural areas. The purpose of the ward plan is not to provide additional information to the situational analysis as contained in Chapter 4 of the IDP, but rather to:

- empower ward councillors and their ward committees with a tool to understand the ward;
- strategically plan the future of the wards, and
- monitor progress being made.

For the aforementioned purposes, the ward plans contain:

- A profile of the ward committee members with contact details;
- A brief demographic profile of the ward;
- A brief profile on the status quo of infrastructure of the ward;
- The needs identified by the community during the Third Generation IDP (that has not been completed due to budgetary constraints) and the needs identified in preparation of the Fourth Generation IDP;
- The provision in the capital budget for the ward for the 2017/18, 2018/19 and 2019/20 medium term budgetary framework; and
- Emergency and other important information for the residents in the ward.

Any changes to the ward plans during the year will therefore only affect the refinement of the demographic profile of towns/settlements and not any of the core elements of the IDP, including the vision, strategic goals and objectives, needs identified by the community and the budget provision for the ward.



## 7.5.3 PROFILE OF WARD 5

### 7.5.3.1 Geographical Description of Ward 5

Ward 5 comprises the Western and Southern portion of Eendekuil, Redelinghuys and Genadenberg which belongs to the Moravian Church of South Africa. Eendekuil is situated 30 km north of Piketberg. This village was the terminus of the Cape Town railway until the end of the Anglo-Boer War, and it remains the railhead for the Citrusdal region, which lies on the other side of the Olifants River.

Redelinghuys is a village located about 160 km north of Cape Town on the Verlorenvlei River. The village is situated on the R366 regional route between Piketberg and Elands Bay. The famous Verlorenvlei (RAMSAR protected) stretches from the upper reaches at Redelinghuys, 30km north and flows into the Atlantic Ocean at Elands Bay. It makes an excellent base for day trips to the seaside or to

explore the scenic country side. Verlorenvlei is renowned for its prolific birdlife (+180 species), indigenous fynbos, flora & fauna, potato farms and unspoilt nature. During the annual flower season (July-September) a multitude of flowers carpet the vicinity with glorious colours and scents. Daisies, chinchinchees, belladonna lilies, arum and also Pink Afrikaner (red lily), also called the Sandveld Lily are to be seen. Redelinghuys is served by a police station, a public library, a satellite health clinic, and two primary schools. Redelinghuys is known as the Potato Capital of the Sandveld, and is also the area where the rooibos grows in its natural state and where Rooibos tea is freely available. Piket-bo-Berg is an area situated on the Piketberg Mountain, producing some of the best fruit and flowers in the Western Cape and is private property. The municipality does not deliver a service to Piket-bo-Berg.

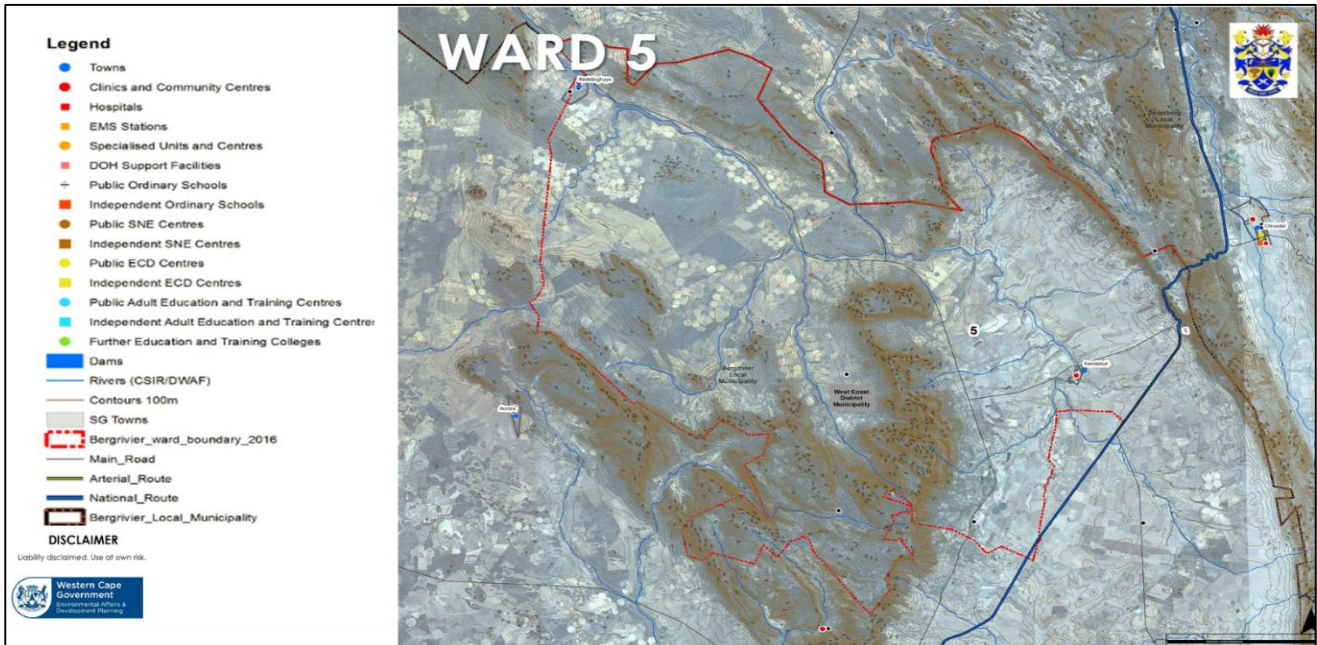
The following map is a demarcation map of Ward 5:

#### Area of Ward 5:

#### Western and Southern portion of Eendekuil, Redelinghuys and Genadenberg

“The peaceful village of Redelinghuys lies hidden between patches of blue gum trees and is surrounded by a rocky hillside. The famous Verlorenvlei (RAMSAR site) stretches from the upper reaches at Redelinghuys 30km north and flows into the Atlantic Ocean at Elands Bay. It is an excellent base for day trips to the seaside or to explore the scenic countryside. Verlorenvlei is renowned for its prolific birdlife, indigenous fynbos, flora & fauna, potato farms and unspoiled nature.”

*<http://www.savenues.com/attractionswc/piketberg.php>*



### 7.5.3.2 Demographic Profile

The following is the demographic profile of Ward 5 based on a variety of sources, including the Community Survey of 2016, MERO 2015 and the survey conducted by the municipality in collaboration with the West Coast District Municipality, StatsSA and Provincial Treasury as at March 2017. . Note that not all information is available per ward, and in the case of population statistics, it should be noted that the 2011 StatsSA statistics are based on the previous ward boundaries.

#### Population and Household

**STANDARD DISCLAIMERS APPLY** Julien.Rumbelow@westerncape.gov.za

Estimates of 2022 Ward data based on the municipal change 2011 to 2016

	2011 Actual			2016 Actual / Estimate			2022 Estimate			Actual / Estimate	
	Population (2011)	Households (2011)	Household size (2011)	Population (2016)	Households (2016)	Household size (2016)	Population (2022)	Households (2022)	Household size (2022)	pop. growth 2011-2016 per year	hh. growth 2011-2016 per year
Western Cape (WC)	5 822 734	1 634 000	3.6	6 279 730	1 933 876	3.2	6 875 714	2 367 230	2.9	1.52%	3.43%
West Coast DM	391 766	106 780	3.7	436 403	129 862	3.4	496 731	164 238	3.0	2.18%	3.99%
Bergrivier	61 897	16 275	3.8	67 474	19 072	3.5	74 834	23 070	3.2	1.74%	3.22%
ward 1	10 508	2 676	3.9	11 455	3 136	3.7	12 704	3 793	3.3	1.74%	3.22%
ward 2	5 210	1 238	4.2	5 679	1 451	3.9	6 299	1 755	3.6	1.74%	3.22%
ward 3	8 727	2 480	3.5	9 513	2 906	3.3	10 551	3 515	3.0	1.74%	3.22%
ward 4	9 460	1 975	4.8	10 312	2 314	4.5	11 437	2 800	4.1	1.74%	3.22%
ward 5	13 015	2 988	4.4	14 188	3 502	4.1	15 735	4 236	3.7	1.74%	3.22%
ward 6	3 646	1 212	3.0	3 975	1 420	2.8	4 408	1 718	2.6	1.74%	3.22%
ward 7	11 332	3 705	3.1	12 353	4 342	2.8	13 700	5 252	2.6	1.74%	3.22%
	61 898	16 274	3.8	67 475	19 071	3.5	74 835	23 069	3.2	1.74%	3.22%

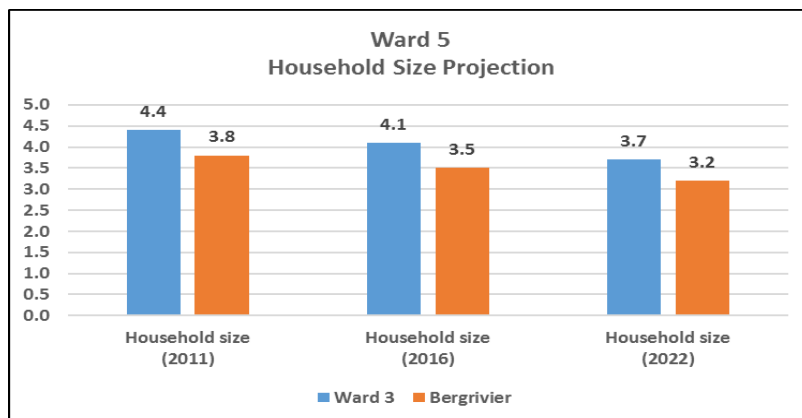
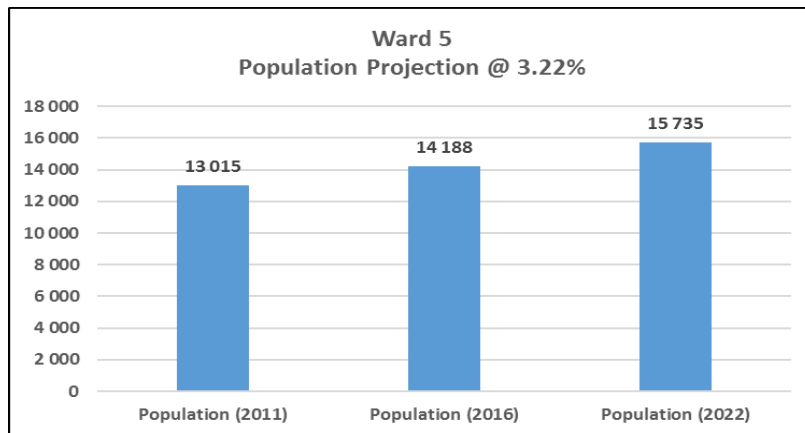
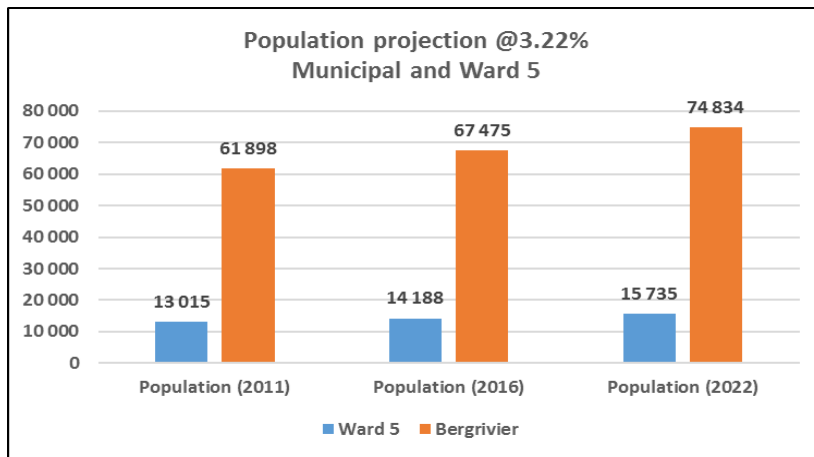
Notes:

- a. Actual data from Census 2011 or Community Survey 2016.
- e. Estimate. Based on assumed equal pro-rata growth across all wards to a known municipal total in 2016 then continuing unchanged. Check against GIS pics.
- i. Totals may not sum to 100% due to rounding.
- ii. The WCG Price Waterhouse Coopers Study (PWC, 2014) on WC Population estimated Bergrivier's 2022 population at 72 375. The data above shows Bergrivier's population estimated at 74 835 in 2022 based on the observed 2011-2016 growth continuing unchanged from the 2016 ward estimates.
- iii. The 2014 PWC Study estimated the total Bergrivier population at 66 847 in 2016 whereas Stats SA Community Survey measured this at 67 475.

source: Stats SA (2011)

StatsSA 2011

Population & Household Projections 2011 – 2022



Based on above population table. Source StatsSA 2011

### Indigent Households

The municipality currently do not have statistics available of indigent households per ward. However, approximately 25% of all households in Bergrivier Municipal Area are indigent.

Population Groups

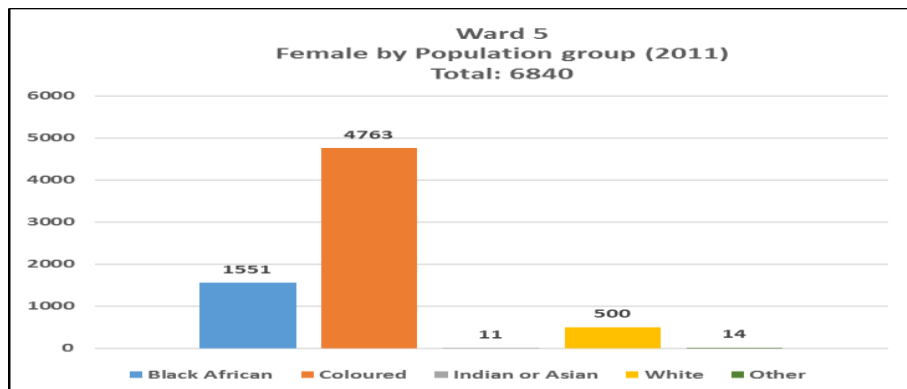
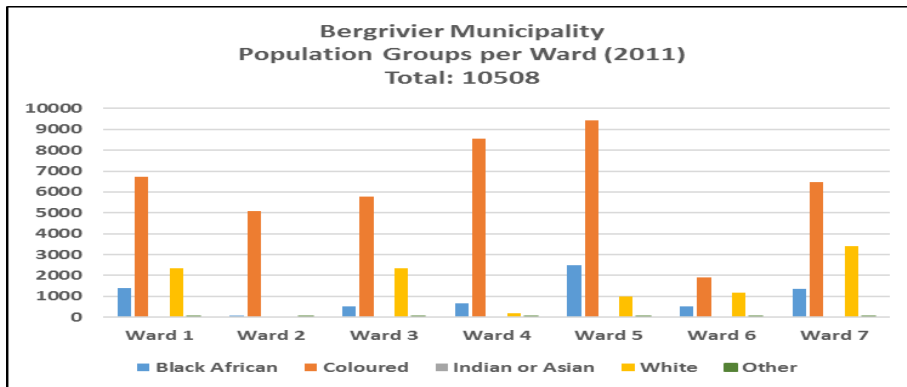
Population Groups 2011 (Source: StatsSA 2011)

**Statistics South Africa**  
**Descriptive\_Electoral\_Wards**  
**Gender by Geography by Population group**  
**for Person weighted**

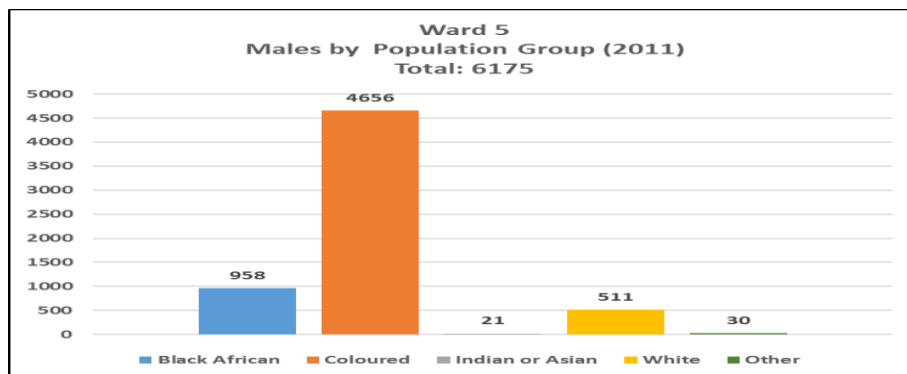
	Black African	Coloured	Indian or Asian	White	Other	Total
Western Cape	1912547	2840404	60761	915053	93969	5822734
DC1: West Coast	64110	260850	2181	61527	3098	391766
WC011: Matzikama	5705	50185	397	9968	892	67147
WC012: Cederberg	6308	37651	171	5462	175	49768
WC013: Bergrivier	7001	43915	256	10456	269	61897
Ward 1	1385	6712	51	2336	24	10507
Ward 2	67	5097	13	5	28	5209
Ward 3	511	5771	41	2345	59	8726
Ward 4	663	8540	41	175	41	9461
Ward 5	2509	9419	32	1011	44	13015
Ward 6	510	1922	24	1181	9	3646
Ward 7	1357	6455	53	3403	64	11333

Created on 17 May 2017  
 Statistics South Africa: Web page: [www.statssa.gov.za](http://www.statssa.gov.za)  
 Support: [info@statssa.gov.za](mailto:info@statssa.gov.za)  
 Copyright © 2010 Statistics South Africa. All rights reserved.

(Based on above population table. Source: StatsSA2011)



The following statistics have been obtained through the client satisfaction survey that is important for a ward. The household questionnaire survey was based on an area systematic proportional sample of at least 10 percent of all urban households. All urban settlements were subdivided into smaller homogeneous sub-areas based on population and housing characteristics. The percentage of households sampled in each town was compared to the 2011 census figures as well as the StatsSA Dwelling Frame data (2015). The field work for the household survey was undertaken by CK Rumboll and Partners and the tabulations by Prof. Larry Zietsman: A



questionnaire was completed at each of the selected dwelling units. This questionnaire included questions about the demographic characteristics of household members, duration of residential occupancy and origin of previous residence if duration of residence was 5 years or less, as well as questions pertaining to the dwelling unit, such as type and ownership.

The geographical distribution of sampled households and sample size percentages were mapped to evaluate the coverage and representativeness of the sample. Based on this evaluation fieldworkers were directed to areas that appeared to have been overlooked. The survey was primarily designed to provide a rapid assessment of the population size in the various urban settlements of the Bergrivier Municipality. Consequently, the data does not contain information to develop detailed demographic and socio-economic profiles of the towns.

An overview of Bergrivier is first important as to contextualize each ward. The average growth rate of the urban population in the Bergriver Municipality was 4.0% per annum. Dwarskersbos has the highest growth rate of all the towns (12.6%). This high growth rate was confirmed by the 2015 StatsSA Dwelling Frame data.

*Table: Comparison of population growth rates per town*

Urban Settlements	Compound Annual Growth Rates
Main Town	2017 Questionnaire Survey (2011-2017)
Aurora	5.3
Dwarskersbos	12.6
Eendekuil	2.6



Urban Settlements	Compound Annual Growth Rates
Main Town	2017 Questionnaire Survey (2011-2017)
Goedverwacht	4.7
Piketberg	2.8
Porterville	1.9
Redelinghuys	3.6
Velddrif	5.6
Wittewater	5.9
Other Small Places	5.5
<b>Total</b>	<b>4.0</b>

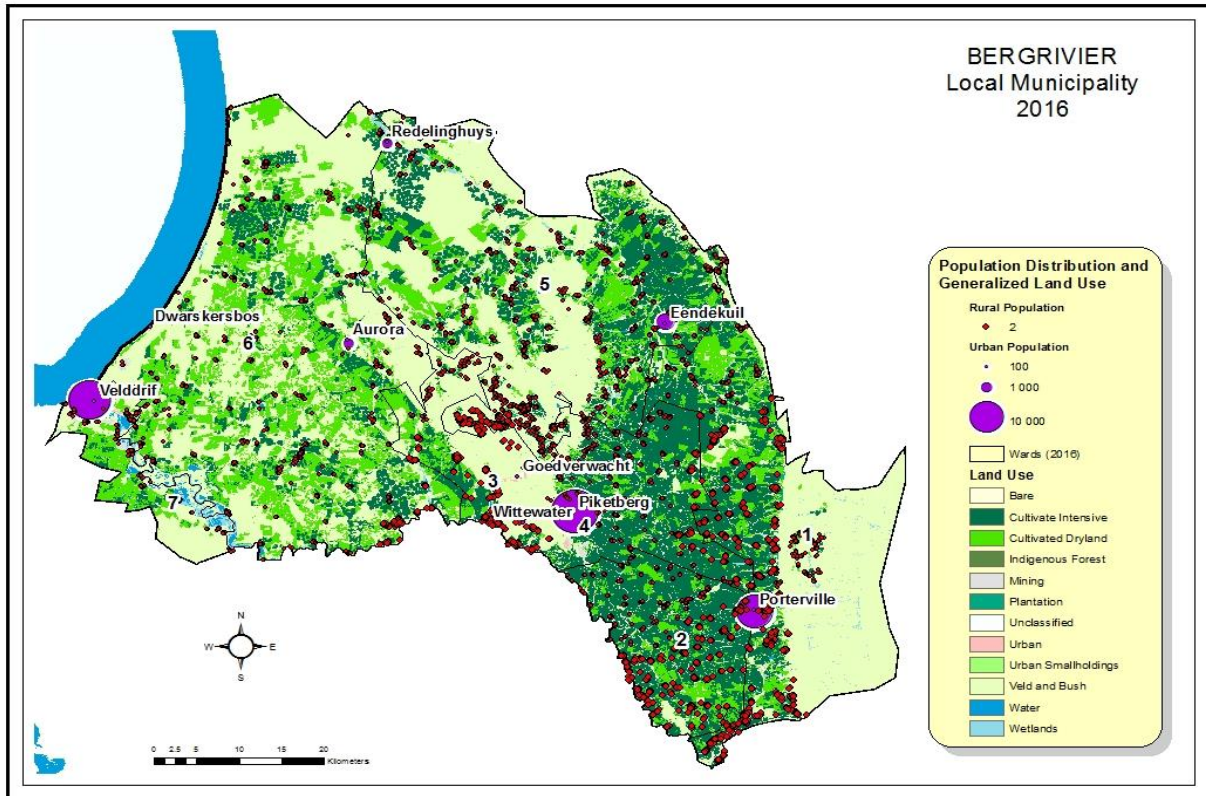
### ESTIMATES OF 2017 WARD POPULATION TOTALS

The ward totals were estimated using the 2016 Community Survey totals per municipality and the distribution of dwellings according to the 2015 Dwelling Frame data. In general the population is concentrated in wards 2, 3 and 4. These three include the three largest towns, namely Velddrif, Piketberg and Porterville. Not only are they the most populous, but also have the largest concentrations of urban people. Velddrif is split between 6 and 7, Piketberg between 3 and 4 and Porterville between 1 and 2. The predominantly rural wards are wards 1 and 5.

*Table: Bergrivier Municipality – 2017 Estimates of ward population by area type*

Ward ID	Rural	Rural Percentage	Urban	Urban Percentage	Total Population
10103001	2934	46.4	3394	53.6	6329
10103002	1530	15.2	8522	84.8	10052
10103003	1897	18.8	8217	81.2	10114
10103004	0	0	15245	100	15245
10103005	3506	52.1	3222	47.9	6728
10103006	1223	9.8	11301	90.2	12524
10103007	279	4.3	6202	95.7	6481
<b>Total</b>	<b>11371</b>	<b>16.9</b>	<b>56103</b>	<b>83.1</b>	<b>67474</b>

Note: Estimated from StatsSA 2016 Community Survey Data and 2015 Dwelling Frame data



Demographic characteristics of the urban population by ward.

Table: Percentage and average age distribution of the urban population by ward

Ward	0 - 5 years	6 - 10	11 - 20	21 - 40	41 - 60	> 60 years	Total	Average Age (years)
1	3.5	5.6	10.1	23.7	33.3	23.7	100.0	42.4
2	10.0	10.1	17.2	28.4	24.5	9.8	100.0	31.2
3	6.8	8.5	13.2	26.6	28.3	16.6	100.0	36.5
4	9.4	12.5	16.6	28.2	23.7	9.6	100.0	30.7
5	15.3	10.8	10.2	27.8	24.4	11.4	100.0	31.3
6	4.0	9.1	10.9	18.2	28.1	29.6	100.0	42.7
7	7.7	7.9	17.8	23.0	26.0	17.5	100.0	35.6
<b>Grand Total</b>	<b>8.2</b>	<b>9.5</b>	<b>15.7</b>	<b>25.4</b>	<b>26.0</b>	<b>15.2</b>	<b>100.0</b>	<b>34.6</b>

Table: Average household size in urban areas by ward

Ward	Sample Size	Total Population Of Sample	Average Household Size
1	76	198	2.6
2	134	592	4.4

Ward	Sample Size	Total Population Of Sample	Average Household Size
3	176	658	3.7
4	235	1061	4.5
5	43	176	4.1
6	91	274	3.0
7	412	1502	3.6
<b>Grand Total</b>	<b>1167</b>	<b>4461</b>	<b>3.8</b>

*Table: Home language spoken in urban areas by ward*

Ward	Afrikaans	English	isiXhosa	Other	Total Percentage
1	98.5	1.5	0.0	0.0	100.0
2	100.0	0.0	0.0	0.0	100.0
3	98.5	1.5	0.0	0.0	100.0
4	99.8	0.0	0.2	0.0	100.0
5	100.0	0.0	0.0	0.0	100.0
6	97.4	2.6	0.0	0.0	100.0
7	90.9	3.4	5.5	0.1	100.0
<b>Average Percentage</b>	<b>96.5</b>	<b>1.6</b>	<b>1.9</b>	<b>0.0</b>	<b>100.0</b>

*Table: Percentage of population in urban areas by duration of residency by ward*

Ward	0 - 5 years	6 - 10	11 - 20	> 20 years	Total	Average Duration
1	17.7	15.7	35.9	30.8	100.0	19.3
2	11.7	10.1	37.0	41.2	100.0	23.1
3	20.5	11.7	24.3	43.5	100.0	22.4
4	16.0	17.7	31.4	34.9	100.0	20.4
5	2.3	5.1	64.8	27.8	100.0	21.3
6	26.6	28.8	26.3	18.2	100.0	14.1
7	22.5	16.5	34.1	26.9	100.0	17.7
<b>Grand Total</b>	<b>18.5</b>	<b>15.5</b>	<b>33.2</b>	<b>32.8</b>	<b>100.0</b>	<b>19.7</b>

*Table: Percentage of households in urban areas by origin of previous residency by ward*

Ward	No Move (Last 5 years)	Elsewhere in this town	Another town in Bergrivier Municipality	On a farm in Bergrivier Municipality	Elsewhere in South Africa	Another country	Total Percentage
1	86.8	6.6	2.6	1.3	2.6	0.0	100.0
2	88.8	7.5	0.0	1.5	2.2	0.0	100.0
3	83.5	6.8	2.8	1.1	4.5	1.1	100.0
4	82.6	9.4	3.8	0.4	3.4	0.4	100.0
5	97.7	2.3	0.0	0.0	0.0	0.0	100.0
6	70.3	7.7	4.4	0.0	15.4	2.2	100.0
7	74.3	11.2	1.2	1.2	12.1	0.0	100.0
<b>Average Percentage</b>	<b>80.4</b>	<b>8.8</b>	<b>2.1</b>	<b>0.9</b>	<b>7.3</b>	<b>0.4</b>	<b>100.0</b>

Table: Percentage distribution of people per dwelling type by ward

Ward	Single house	Town house / semi-detached house / apartment	Informal shack	Other	Total Percentage	Percentage of Backyard Dwellers
1	100.0	0.0	0.0	0.0	100.0	1.5
2	93.4	6.6	0.0	0.0	100.0	13.2
3	99.8	0.2	0.0	0.0	100.0	1.7
4	90.2	9.8	0.0	0.0	100.0	13.0
5	100.0	0.0	0.0	0.0	100.0	17.0
6	98.9	1.1	0.0	0.0	100.0	5.1
7	96.1	3.1	0.7	0.1	100.0	11.0
<b>Average Percentage</b>	<b>95.4</b>	<b>4.3</b>	<b>0.2</b>	<b>0.0</b>	<b>100.0</b>	<b>9.8</b>

Table: Percentage distribution of households per ownership type by ward

Ward	Owner	Renter	Staying Free	Other	Total Percentage
1	96.5	3.5	0.0	0.0	100.0
2	86.3	5.9	3.2	4.6	100.0
3	84.3	9.0	2.0	4.7	100.0
4	90.2	4.5	3.5	1.8	100.0

Ward	Owner	Renter	Staying Free	Other	Total Percentage
5	79.5	11.4	9.1	0.0	100.0
6	90.9	8.4	0.0	0.7	100.0
7	84.9	10.1	4.6	0.4	100.0
<b>Average Percentage</b>	<b>88.7</b>	<b>7.3</b>	<b>2.2</b>	<b>1.8</b>	<b>100.0</b>

## Employment

### Employment status

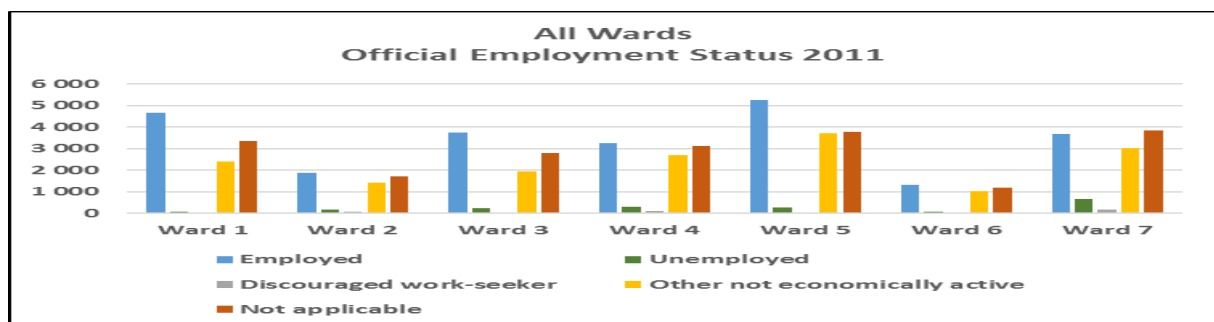
Statistics South Africa  
Education\_Electoral\_Wards  
Table 1  
Geography by Official employment status  
for Person weighted

	Employed	Unemployed	Discouraged work-seeker	Other not economically active	Not applicable	TOTAL	employed %	unemployed broad %	unemployed narrow %	Other not economically active	Not applicable
Western Cape	2 010 699	552 732	122 754	1 330 518	1 806 033	5 822 736	34.5%	11.6%	9.5%	22.9%	31.0%
DC1: West Coast	141 117	24 204	5 526	97 632	123 288	391 767	36.0%	7.6%	6.2%	24.9%	31.5%
WC011: Matzikama	23 808	3 888	1 302	15 951	22 200	67 149	35.5%	7.7%	5.8%	23.8%	33.1%
WC012: Cederberg	18 540	2 187	657	12 477	15 909	49 770	37.3%	5.7%	4.4%	25.1%	32.0%
WC013: Bergrivier	23 760	1 731	462	16 185	19 758	61 896	38.4%	3.5%	2.8%	26.1%	31.9%
Ward 1	4 659	54	33	2 406	3 351	10 503	44.4%	0.8%	0.5%	22.9%	31.9%
Ward 2	1 863	153	54	1 419	1 719	5 208	35.8%	4.0%	2.9%	27.2%	33.0%
Ward 3	3 747	228	21	1 938	2 796	8 730	42.9%	2.9%	2.6%	22.2%	32.0%
Ward 4	3 234	309	111	2 688	3 117	9 459	34.2%	4.4%	3.3%	28.4%	33.0%
Ward 5	5 265	258	30	3 699	3 762	13 014	40.5%	2.2%	2.0%	28.4%	28.9%
Ward 6	1 326	75	42	1 017	1 182	3 642	36.4%	3.2%	2.1%	27.9%	32.5%
Ward 7	3 666	654	165	3 012	3 834	11 331	32.4%	7.2%	5.8%	26.6%	33.8%

All cells in this table have been randomly rounded to base 3

Created on 18 May 2017  
Statistics South Africa: Web page: [www.statssa.gov.za](http://www.statssa.gov.za)  
Support: [info@statssa.gov.za](mailto:info@statssa.gov.za)  
Copyright © 2010 Statistics South Africa. All rights reserved.

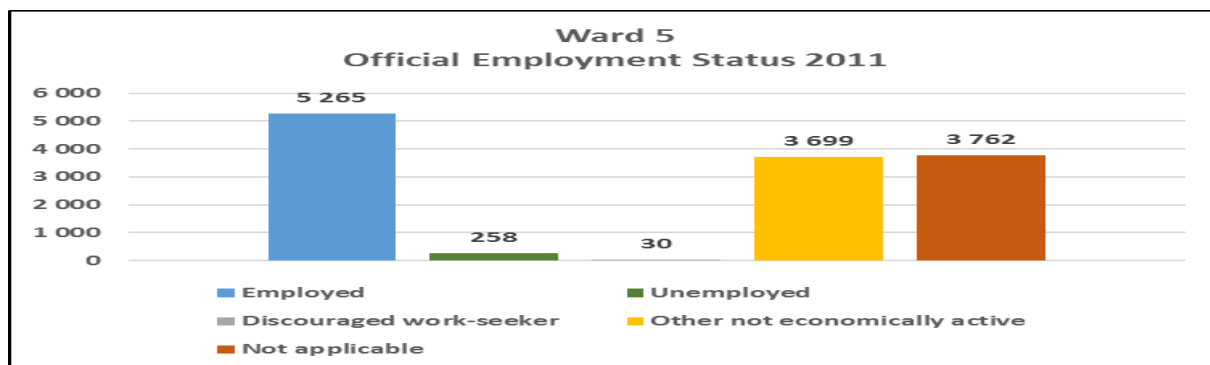
Source: StatsSA 2011



### 7.5.3.3 Social Profile

There is currently limited information available on the indicators to determine the social-economic profile of a ward. Chapter 4 contains significant information on the social profile of Bergvriër municipal area. Information that could be obtained, include recent statistics from the local school and from the clinics:

#### Education and Skills



Redelinghuys Primary School:

Indicator	2014	2015	2016	2017
Number of learners	203	196	201	205
Average learner/teacher ratio	1/35	1/35	1/35	1/35
Average “dropout” rate	0%	0%	0%	0%
Drop % in FET phase	n/a	n/a	n/a	n/a
Number of primary schools	2	2	2	2
Number of secondary schools	n/a	n/a	n/a	n/a
Number of “no fee” schools	1	1	1	1
Pass rate for Senior Certificate	n/a	n/a	n/a	n/a

Eendekuil Primary School

Indicator	2014	2015	2016	2017
Number of learners	316	321	326	329
Average learner/teacher ratio	35,1	36	36,2	37
Average “dropout” rate	3	3	3	4
Drop % in FET phase	n/a	n/a	n/a	n/a
Number of primary schools	1	1	1	1
Number of secondary schools	0	0	0	0
Number of “no fee” schools	1	1	1	1
Pass rate for Senior Certificate	n/a	n/a	n/a	n/a

#### Health

Eendekuil clinic	2014	2015	2016	Total clients	Total tested for HIV	Total HIV positive
Headcount 5 years and older	4 667	4 923	3 957	16 588		

Headcount under 5 years	1 001	999	1 041			
Total clients accepted HCT (incl antenatal)	648	769	466		1 883	
Total clients tested HIV pos (incl antenatal)	7	6	5			18
Diabetes patients put on treatment 18 years and older - new	5	6	0			
Diabetes patients put on treatment under 18 years - new	0	0	0			
Hypertension case put on treatment under 18 years - new	5	5	0			
Hypertension case put on treatment 18 years and older - new	18	97	1			
<b>Redelinghuys clinic</b>	<b>2014</b>	<b>2015</b>	<b>2016</b>	<b>Total clients</b>	<b>Total tested for HIV</b>	<b>Total HIV positive</b>
Headcount 5 years and older	3 246	3 473	3 321	11 788		
Headcount under 5 years	596	618	534			
Total clients accepted HCT (incl antenatal)	357	401	396		1154	
Total clients tested HIV pos (incl antenatal)	13	11	17		41	41
Diabetes patients put on treatment 18 years and older - new	2	1	4			
Diabetes patients put on treatment under 18 years - new	0	0	0			
Hypertension case put on treatment under 18 years - new	0	0	0			
Hypertension case put on treatment 18 years and older - new	5	22	1			

#### 7.5.3.4 Access to Municipal Services

It is important to acknowledge the distinction between bulk and reticulation infrastructure as to understand the priorities engineers at the municipality place on development. The needs of the community reflect predominantly on infrastructure such as streets, pavements, street lighting, water and sanitation on a household and street level. Whereas it is the priority of the municipality to deliver and maintain these services, the focus is also to ensure sustainable bulk infrastructure. This requires specialist knowledge and a study was done in 2016/17 by the municipality on the status of infrastructure. The following is a snapshot of the status of infrastructure in Bergvliet municipal area and the status of the towns in Ward 5 can clearly be seen:

The legend of the snapshot is as follows:

- Red - Upgrading needed before 2020
- Yellow - Upgrading needed between 2020 and 2025

- Green - Upgrading needed between 2025 and 2035

The following is a brief discussion on the status of various infrastructure being delivered and service levels in the urban areas of Eendekuil and Redelinghuys: (Note: the figure for the rural areas will be incorporated once the information has been obtained and verified)

- Access to Piped Water**

Piped (tap) water inside dwelling/institution	Piped (tap) water inside yard	Piped (tap) water on community stand: distance less than 200m from dwelling/institution	Piped (tap) water on community stand: distance between 200m and 500m from dwelling/institution	Piped (tap) water on community stand: distance between 500m and 1000m (1km) from dwelling /institution	Piped (tap) water on community stand: distance greater than 1000m (1km) from dwelling/institution	No access to piped (tap) water
441	74	1	-	-	--	1

Source: StatsSA2011

- Energy or fuel for cooking**

Electricity	Gas	Paraffin	Wood	Coal	Animal dung	Solar	Other	None	Unspecified	Not applicable
509	6	-	4	-	-	-	-	-	-	-

Source: StatsSA2011

- Energy or fuel for lighting**

Electricity	Gas	Paraffin	Candles (not a valid option)	Solar	None	Unspecified
512	-	-	5	-	2	-

Source: StatsSA2011

- Refuse removal**

Town	Water Source	WTW	WWTW	Electricity	Storage
<u>Piketberg</u>					
<u>Porterville</u>					
<u>Velddrif</u>					
<u>Eendekuil</u>					
<u>Redelinghuys</u>			Septic Tanks		
<u>Aurora</u>			Septic Tanks		
<u>Dwarskersbos</u>					



Removed by local authority/private company at least once a week	Removed by local authority/private company less often	Communal refuse dump	Own refuse dump	No rubbish disposal	Other
515	-	-	3	1	-

Source: StatsSA2011

- Source of Water

Regional/local water scheme (operated by municipality or other water services provider)	Borehole	Spring	Rain water tank	Dam/pool/stagnant water	River/stream	Water vendor	Water tanker	Other
482	7	21	-	-	1	-	-	7

Source: StatsSA2011

- Toilet facilities

None	Flush toilet (connected to sewerage system)	Flush toilet (with septic tank)	Chemical toilet	Pit toilet with ventilation (VIP)	Pit toilet without ventilation	Bucket toilet	Other
16	440	37	-	-	-	1	24

Source: StatsSA2011

## 7.5.4 INFRASTRUCTURE DEVELOPED AND/OR MUNICIPAL SERVICES DELIVERED IN WARD 5

### 7.5.4.1 Access to Basic Services

The following services are being delivered to indigent households on a sustainable level in Ward 5

Water			Sanitation	
Urban	RDP	Informal	Septic tanks	Flush toilets
1 Basic + 6kl Water			1	1 Heffing
Electricity			Refuse Removal	
Limited to 20 Amp=50 Units >20 Amp=0			1 x /week	

### 7.5.4.2 Capital spend on bulk infrastructure

Dept Description	PROJECT_OWN_DESCRIPTION	WYK	Requested BUD1819	Requested Funding 2018/19	Requested BUD1920	Requested Funding 2019/20	Requested BUD2021	Requested Funding 2020/21
Solid Waste Removal	Refuse collection point (RH/DKB/EK)	5,6		el		el	1 900 000	el
Roads	Construction/Design of roads	5	175 000	cr	200 000	cr	300 000	cr
Roads	Construction/Design of roads	5	175 000	cr	200 000	cr	300 000	cr
Roads	Cement ditches in Aurora	5	60 000	cr	60 000	cr	80 000	cr
Roads	Reseal/Construction of streets	5	100 000	el				

### 7.5.4.3 Housing applicants

Although the municipality is only an implementation agent for housing, it is important to highlight the backlog in housing in Ward 5:

Town	Applicants 2011/12	Applicants 2012/13	Applicants 2013/14	Applicants 2014/15	Applicants 2015/16	Applicants 2016/17
Eendekuil	220	220	181	196	193	
Redelinghuys	178	179	148	240	245	

Priority	Project	Town	Start	End	Capacity Until
2	IRDP	EK	Jul 18	Jul 19	23

### 7.5.4.4 Libraries

The municipality delivers library services to the community on an agency basis and has a library in the towns of Eendekuil, Redelinghuys and Versfeld. The following information outlines these services:

#### **Library books issued per annum**

LIBRARY	2011/12	2012/13	2013/14	2014/15	2015/16	2016/17
Eendekuil	4 305	3 139	2 600	2 625	5 818	
Redelinghuys	9 591	7 724	5 314	6 000	5 390	
Versfeld	0	0	693	4 247	14 868	

### 7.5.4.5 Sport Development

The following sport facilities exist in Ward 5:

Rugby, Soccer, Athletics, Tennis, Netball, Jukskei

### 7.5.4.6 Law enforcement

The municipality is responsible for law enforcement and the following is a summary of law enforcement in Ward 5:

- \* Patrols in all towns have been increased and regular road blocks and joint operations are being held with the SAPS;
- \* The enforcement of speed in all the areas;
- \* The education and mentoring of Pre - School children to prepare themselves to be responsible road users in the future;
- \* The successful addressing and illumination of illegal squatters on Municipal open spaces;
- The signing of a contract between the SPCA and the Municipality to enhance better service delivery to address the animal needs and welfare. Regular Animal clinics are being held;
- The renewing of a contract between the SPCA and the Municipality to enhance better service delivery to address the animal needs and welfare;
- The education and mentoring of Primary and Pre-school kids to prepare themselves to be responsible road users in the future. The “Daantjie Kat” training program was presented at various schools; and
- The sustained upgrading and refreshing of the road signage and markings in all the different areas of Bergrivier Municipality.

## 7.5.5 Town Planning

The management of planning and development within the Municipality takes place in accordance with National and Provincial legislation, combined with the Municipality’s applicable by-laws and policies. The Municipality’s by-laws and policies are aligned with National and Provincial directives and aim to facilitate sustainable urban and rural development within the jurisdiction area of the Municipality. Planning also includes all aspects pertaining to the management of municipal immovable property (land).

### 7.5.5.1 Planning Applications

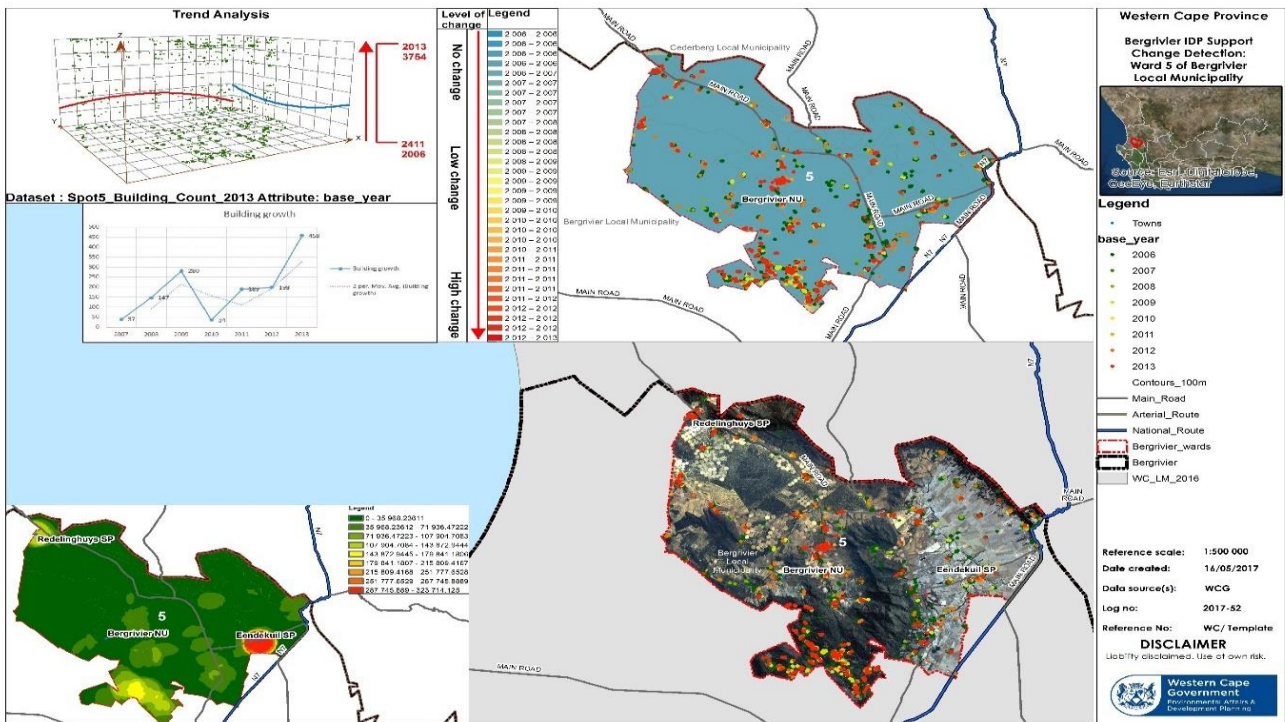
The following indicates the various planning applications which were finalised from 2012 - 16 for ward 5:

:TYPE OF APPLICATION	TOWN	SUBDIVISIONS	REZONINGS	CONSENT USES	DEPARTURES	REMOVAL OF RESTRICTIONS
Planning applications received	Eendekuil	-	-	-	-	-
	Redelinghuys	3	2	-	-	-
	Eendekuil	-	-	-	1	-

Applications finalised/resolved	Redelinghuys	4	1	-	3	-
Applications outstanding	Eendekuil	1	-	-	-	-
	Redelinghuys	-	1	-	-	-

It is important (and legislatively required) to keep record of the various planning decisions made by the competent authority. By spatially depicting these decisions, a visual representation can over time be constructed, which could assist to identify trends, needs and gaps and to direct future decisions on development planning issues.

### 7.5.5.2 Change Detection



During 2016, the Department of Environmental Affairs and Development Planning embarked on a project to investigate change detection for building growth trends and hot spot analysis for Western Cape municipalities: “Detecting Building Hotspots”. With rapid changes in developments occurring over huge areas within the Western Cape Province, whereby many developments taking place unnoticed and unplanned shows an alarming signal that government planned infrastructure will soon be outrun, and this threatens government service delivery. Change detection is the assessment of the same area or object over specific different periods of time by means of quantitative analysis based on geo-metric registrations, radiometric normalisation,

calibration, classification of change detection schemes, change detection methods and ground truth data (Mas, 1999).

Change detection was conducted through the use of the following methodologies: Data applied in these methodologies was the Eskom Spot 5 satellite building count data, and various geo-statistical analysis techniques were used as a spatial modelling tool to interpolate surface areas using SBC, and in terms of modelling building density point pattern spatial analysis was also carried out using the same data. Trend analysis was included in this project, because it's also a very important technique to show the rate at which building growth patterns are increasing or diminishing, and in which area this is happening. The technical report for the project, dated March 2016, is available for more detailed investigation.

In Ward 5, the above map and illustrative graphs show that the denser development in the Ward can be found around Eendekuil town, with another (slightly less) dense area to the south of the Ward in the mountainous areas north of Goedverwacht. Redelinghuys also shows up as a more dense area than the rest of the agricultural lands in the Ward. Interestingly though is the indication that the building “hot spots” (showing the level of changes from older to more recent) seem to be located more towards the mountainous area in the south of the Ward. The study cannot predict the specific reason for these hot spots, but merely shows trends that decision makers should be aware of, its significance for service delivery. In the review of the Spatial Development Framework, closer investigation of these trends can direct the recommendations for development over the longer term.

### 7.5.5.3 Development Priorities

Development priorities include:

- The re-thinking of the future of the towns in ward 5 given the urbanisation taking place to the bigger centres.

## 7.5.6 LOCAL ECONOMIC DEVELOPMENT

Although the Local Economic Development Strategy is for Bergrivier as a whole, some projects will impact on Ward 5. Some of these projects include:

- \* Enhancing local mobility
- \* Informal trading - The municipality provides retail trading spaces at R 100 per month amount. Lease agreements run for a period of 12 months. The purpose of these facilities is to provide traders in the informal economic sector with the opportunity to trade in the central business zones.
- \* LED Training - Through the West Coast Business Development Centre, a SMME Forum was established in Piketberg and the WCBDC is also responsible for a continuous programme of small business training in all of the other towns in Bergrivier.

According to a Business Climate Survey (2014) of the West Coast District, more than 60% of businesses were within the retail, wholesale trade, catering and accommodation sectors (MERO 2016 p38). The Small Enterprise Development Agency (SEDA) has also been offering assistance within the West Coast through providing business development support for SMMEs. (MERO 2016, p38). Agri-parks are currently being developed within the West Coast District which will result in opportunities for vegetable and crayfish farmers (MERO 2016, p38). There are also tourism opportunities within the West Coast in terms of small business offering cycling tours, opening up backpackers as well as transporting tourists to local communities to experience local life. (MERO 2016, p38). Government can assist in the development of SMMEs in the District through creating incentives for foreign store owners to form partnerships with local store owners. This will assist in decreasing the tension between locals and foreigners as well as prevent local store owners from having to shut down their businesses. (MERO 2016, p38).

Improved transportation connectivity between West Coast areas and the Saldanha Bay IDZ would provide opportunity for SMME growth in the District. The SMMEs, which are predominantly locally owned, fall into the following business types, namely engineering, construction, earth moving plant and tippers, transport and logistics, accommodation, catering, security, manufacturing and information technology. Challenges identified for the West Coast District were the lack of funding, lack of capacity, as well as the lack of training. Despite these challenges, the West Coast Development Business Centre (WCBDC) identified that the number of developments in the West Coast District can bring about numerous opportunities for the SMMEs. Bergrivier Municipality has an agreement with the WCBDC to assist in the development of SMMEs as they are there to develop and enhance SMMEs through the delivery of quality and cost competitive service (West Coast Development Business Centre, 2016).

### 7.5.7 BERGRIVIER TOURISM

Bergrivier Tourism Organisation (BTO) - The Bergrivier Tourism Organisation (BTO) manages the tourism function on behalf of the municipality. BTO has offices in Piketberg, Velddrif, Porterville and Goedverwacht. The Municipality provides the BTO with a grant to cover for some of their operational costs during the financial years. The following activities and projects take place in ward 1 and still do on a yearly base:

- Tourism Blue Print was contracted to design a website for Bergrivier Tourism and the URL [www.travelbergrivier.co.za](http://www.travelbergrivier.co.za) was registered as the official website address of the new site;
- BTO attend consumer shows such as the Outdoor Show, CTT Joint Marketing, Cape Town Getaway and the Namibian Tourism Expo. Most of these shows involve direct engagement with the public. With the exception of the Namibian Tourism Expo, BTO can attend these consumer shows at very low costs as most of the expenses are carried by the RTO.

## 7.5.8 CLIMATE CHANGE AND BIODIVERSITY

The Municipality has a **Climate Change Adaption Plan** which is based on each ward in the Bergrivier area. The Municipality also highlights issues such as continued conservation of coastal, estuary and biodiversity, sustainable water management, developing the alternative energy plan, establish a PPC biomass-to-energy initiative in Piketberg and provide resilient and low carbon low income housing. The Municipality considers the management and promotion of protected areas and critical biodiversity as a socio-economic development priority. Plans and actions which has been taken includes:

- a) Participation in the Local Action for Biodiversity Programme
- b) Use of CBAs in spatial development planning
- c) Conservation of the Berg River Estuary
- d) Adopt a street tree campaign
- e) Coastal cleaning
- f) Cleaning of the Porterville stream
- g) Clearing of alien vegetation
- h) The development and implementation of an Estuary and Integrated Coastal Management Plan
- i) Biodiversity and training for Councillors, official and ward committee members and the municipal residents
- j) Plans of incorporating green energy, solar geysers and energy efficiency measures in low cost housing

Other biodiversity programmes include:

- Recycling in all towns and introduction composting
- Ongoing efforts of addressing the rehabilitation of waste disposal sites
- Plans of awareness campaigns among farmers and in public schools to increase awareness of the importance of waste minimization and recycling.

## 7.5.9 CLIENT SATISFACTION

A survey was conducted in 2016/17 on client satisfaction per ward and each ward was divided into sections to ensure with a 10% sampling per section. This ensures that the ward has been surveyed in totality and not limited to specific areas in/of a ward. A sample of 10% is regarded as a fair reflection of the sentiments in a community as a whole.

The following is a summary of the survey for Ward 5:

- Eendekuil

Answer Options	Poor	Below average	Average	Above average	Excellent	Don't know	Response Count
Percentage	16%	10%	22%	34%	16%	2%	
Answer Options						Response Percent	Response Count
Tarring of roads						53,8%	14
Resurface roads (Improve quality of road surface)						15,4%	4
Fixing of potholes						0,0%	0
Sweeping of streets						3,8%	1
Provide street names, traffic signs and markers						26,9%	7
Build speed bumps						34,6%	9
Other (please specify)						0,0%	0

Street lights							
Answer Options	Poor	Below average	Average	Above average	Excellent	Don't know	Response Count
Percentage	10%	4%	12%	60%	14%	0%	
Answer Options						Response Percent	Response Count
Installing street lights (none in street)						0,0%	0
Provide additional street lights						21,4%	3
Replace lights - faulty						71,4%	10
Replace lights - too dim						7,1%	1
Other (please specify)						21,4%	3

Sidewalks							
Answer Options	Poor	Below average	Average	Above average	Excellent	Don't know	Response Count
Percentage	18%	10%	12%	46%	14%	0%	
Answer Options						Response Percent	Response Count
Build additional sidewalks						38,1%	8
Resurface existing sidewalks						38,1%	8
Widen sidewalks						9,5%	2
Keep sidewalks clean (Remove refuse)						19,0%	4
Keep sidewalks clean (Remove weeds)						9,5%	2
Other (please specify)						19,0%	4

Storm water							
Answer Options	Poor	Below average	Average	Above average	Excellent	Don't know	Response Count
Percentage	16%	4%	4%	58%	18%	0%	
Answer Options						Response Percent	Response Count
Provide storm water channel curbs						58,3%	7
Keep storm water channel curbs and drains clean						50,0%	6



Capacity of existing storm water channel curbs to be enlarged	25,0%	3
Other (please specify)	8,3%	1

Provision of electricity							
Answer Options	Poor	Below average	Average	Above average	Excellent	Don't know	Response Count
Percentage	6%	2%	2%	66%	24%	0%	
Answer Options	Response Percent					Response Count	
Replace faulty/ old reticulation infrastructure incl. meters	14,3%					1	
Speed-up provision of electrical connections	0,0%					0	
Provide additional reticulation infrastructure	0,0%					0	
Enlarge capacity (to prevent outages)	0,0%					0	
Reduce price of electricity	71,4%					5	
Restoration of connections after outages	0,0%					0	
Other (please specify)	14,3%					1	

Provision of water							
Answer Options	Poor	Below average	Average	Above average	Excellent	Don't know	Response Count
Percentage	6%	0%	2%	66%	26%	0%	
Answer Options	Response Percent					Response Count	
Provide additional infrastructure	25,0%					1	
Enlarge capacity (reservoirs or sources)	0,0%					0	
Maintain infrastructure (Fix leaks and faulty meters)	0,0%					0	
Speed-up provision of connections	0,0%					0	
Improve water quality	0,0%					0	
Reduce price of water	50,0%					2	
Improve access to water / far from nearest tap	0,0%					0	
Fix low water pressure	0,0%					0	
Restoration after pipe bursts	0,0%					0	
Other (please specify)	50,0%					2	

Provision of sanitation							
Answer Options	Poor	Below average	Average	Above average	Excellent	Don't know	Response Count
Percentage	6%	0%	6%	62%	26%	0%	
Answer Options	Response Percent					Response Count	
Provide flush toilets & necessary infrastructure	33,3%					2	
Speed-up provision of connections	16,7%					1	
Enlarge sewer plant capacity	0,0%					0	
Maintain infrastructure (Fix blockages)	16,7%					1	
Attend to bad odours	16,7%					1	
Speedy clearance of blockages	0,0%					0	
Reduce price for sewerage services	0,0%					0	
Other (please specify)	33,3%					2	

Refuse removal							
Answer Options	Poor	Below average	Average	Above average	Excellent	Don't know	Response Count
Percentage	0%	0%	0%	68%	32%	0%	

Recreational facilities and play parks							
Answer Options	Poor	Below average	Average	Above average	Excellent	Don't know	Response Count
Percentage	30%	10%	10%	24%	6%	20%	

Answer Options	Response Percent	Response Count
Provide additional sport fields	16,7%	4
Upgrade existing sport facilities	29,2%	7
Provide shade at sport fields (plant trees)	16,7%	4
Relocate sport fields/ recreational facilities	0,0%	0
Clean and maintain sport fields	4,2%	1
Provide and maintain recreational equipment for children	20,8%	5
Make play parks safe for children	41,7%	10
Clean and maintain play parks	20,8%	5
Maintenance of municipal swimming pool	0,0%	0
Cleanliness of municipal swimming pool	0,0%	0
Other (please specify)	45,8%	11

Resorts: Caravan parks / Camping sites							
Answer Options	Poor	Below average	Average	Above average	Excellent	Don't know	Response Count
Percentage	2%	0%	2%	10%	0%	86%	

Answer Options	Response Percent	Response Count
Keep terrain and buildings clean and tidy	0,0%	0
Maintain ablution facilities	0,0%	0
Provide security	50,0%	1
Provide shade and landscape facility	0,0%	0
Other (please specify)	50,0%	1

Beautification (Open spaces/ Cemeteries / Streets)							
Answer Options	Poor	Below average	Average	Above average	Excellent	Don't know	Response Count
Percentage	24%	4%	32%	32%	6%	2%	

Answer Options	Response Percent	Response Count
Clean and maintain Open Spaces	43,3%	13
Clean and maintain cemeteries	50,0%	15
Provide and maintain garden furniture (benches & bins)	16,7%	5
Plant trees and shrubs (landscape) cemeteries	60,0%	18
Plant trees and shrubs (landscape) along streets	20,0%	6

Clean and Maintain municipal buildings and infrastructure	3,3%	1
Other (please specify)	3,3%	1

Libraries, Museums and Municipal buildings							
Answer Options	Poor	Below average	Average	Above average	Excellent	Don't know	Response Count
Percentage	4%	4%	6%	62%	10%	14%	
Answer Options	Response Percent					Response Count	
Provide community hall	42,9%					3	
Improve library service	28,6%					2	
Clean and maintain library	14,3%					1	
Improve access to libraries	28,6%					2	
Improve museum service	0,0%					0	
Clean and maintain and develop museum	0,0%					0	
Improve access to museums	0,0%					0	
Appropriate use of municipal buildings and grounds	14,3%					1	
Clean and maintain municipal buildings	0,0%					0	
Other (please specify)	14,3%					1	

Traffic services							
Answer Options	Poor	Below average	Average	Above average	Excellent	Don't know	Response Count
Percentage	4%	10%	12%	58%	12%	4%	
Answer Options	Response Percent					Response Count	
Improve vehicle registrations and licencing	0,0%					0	
Improve efficiency of vehicle licence renewals	15,4%					2	
More visible patrolling	76,9%					10	
Control those who speed / drive recklessly	46,2%					6	
More friendly service	23,1%					3	
Improve road-side support	15,4%					2	
Other (please specify)	0,0%					0	

Emergency services							
Answer Options	Poor	Below average	Average	Above average	Excellent	Don't know	Response Count
Percentage	22%	8%	8%	46%	12%	4%	
Answer Options	Response Percent					Response Count	
Improve availability	57,9%					11	
Improve reaction times	84,2%					16	
Improve training of emergency staff	5,3%					1	
Improve support during emergencies	26,3%					5	
Other (please specify)	5,3%					1	

**Building Plan Approval and Control**

Answer Options	Poor	Below average	Average	Above average	Excellent	Don't know	Response Count
Percentage	2%	2%	6%	22%	2%	66%	
Answer Options						Response Percent	Response Count
Shorten time taken to approve building plans						50,0%	2
Undertake compliance inspections of completed buildings						0,0%	0
Improve awareness of requirements to submit building plans						25,0%	1
Improve awareness of procedure to submit building plan applications						25,0%	1
Improve access to status of applications						50,0%	2
Other (please specify)						0,0%	0

Land Use Planning and Control							
Answer Options	Poor	Below average	Average	Above average	Excellent	Don't know	Response Count
Percentage	0%	0%	2%	14%	2%	82%	
Answer Options						Response Percent	Response Count
Improve land use (re-zoning and subdivision) applications process						0,0%	0
Improve clarity re land use application procedure and requirements						0,0%	0
Improve access to status of land use applications						0,0%	0
Improve procedure to issue zoning certificates						0,0%	0
Improve correctness of zoning certificates						0,0%	0
Improve awareness of spatial development framework provisions						100,0%	1
Improve awareness of town plans						0,0%	0
Improve the process of land transactions and letting						100,0%	1
Improve the process of property valuation						0,0%	0
Improve property tax administration						0,0%	0
Other (please specify)						0,0%	0

Administration and communication							
Answer Options	Poor	Below average	Average	Above average	Excellent	Don't know	Response Count
Percentage	20%	2%	6%	46%	18%	8%	
Answer Options						Response Percent	Response Count
Improve response to general enquiries						10,0%	1
Improve communication with the public						70,0%	7
Improve financial administration						0,0%	0
Improve skills to solve account queries						0,0%	0
Improve internal communication						10,0%	1
Alleviate financial burden of unemployed debtors						10,0%	1
Ward councillor does not serve the community						50,0%	5
Improve the effectiveness of ward councillors						0,0%	0
Other (please specify)						0,0%	0

**Municipal staff**

Answer Options	Poor	Below average	Average	Above average	Excellent	Don't know	Response Count
Percentage	0%	2%	2%	64%	30%	2%	
Answer Options	Response Percent					Response Count	
Staff member at Office	0,0%					0	
Public meetings	0,0%					0	
Community Development Workers	0,0%					0	
Pamphlets and newsletters	56,0%					28	
SMS	14,0%					7	
Local Newspapers	12,0%					6	
Municipal Accounts	16,0%					8	
Municipal Website	0,0%					0	
Social Media (Facebook, Twitter)	2,0%					1	
Other (please specify)	0,0%					0	

Housing							
Answer Options	Poor	Below average	Average	Above average	Excellent	Don't know	Response Count
Percentage	46%	10%	36%	6%	0%	2%	
Answer Options	Response Percent					Response Count	
Provide more housing for low income families	95,7%					44	
Support residents to fix badly built subsidized (before 1996) houses	26,1%					12	
Provide more GAP housing	15,2%					7	
Too few rooms	21,7%					10	
Provide ablution facilities	13,0%					6	
Other (please specify)	2,2%					1	

SMME/Local Economic Development							
Answer Options	Poor	Below average	Average	Above average	Excellent	Don't know	Response Count
Percentage	14%	0%	4%	2%	0%	80%	
Answer Options	Response Percent					Response Count	
Provide land for emerging farmers	22,2%					2	
Facilitate partnerships with commercial farmers	0,0%					0	
Provide trading stalls	77,8%					7	
Property tax rebates for small businesses	22,2%					2	
Provide beehives for small manufacturing enterprises	0,0%					0	
Provide technical support	22,2%					2	
Provide infrastructure for fishermen (slipway)	0,0%					0	
Assist fishermen with acquisition of equipment/boats	0,0%					0	
Other (please specify)	0,0%					0	
Answer Options	Response Percent					Response Count	
Provide more jobs	97,7%					43	
Provide/Support skills development programmes	38,6%					17	
Provide/Support adult education	34,1%					15	

Other (please specify)	4,5%	2
------------------------	------	---

Education							
Answer Options	Poor	Below average	Average	Above average	Excellent	Don't know	Response Count
Percentage	10%	0%	12%	62%	8%	8%	
Answer Options				Response Percent	Response Count		
Improve access to education				40,0%	4		
Support maintenance of educational facilities				40,0%	4		
Provide financial assistance to educational institutions				50,0%	5		
Provide after school care facilities				70,0%	7		
Other (please specify)				0,0%	0		

Health issues							
Answer Options	Poor	Below average	Average	Above average	Excellent	Don't know	Response Count
Percentage	22%	12%	20%	26%	6%	14%	
Answer Options				Response Percent	Response Count		
Provide buildings for clinics				23,1%	6		
Employ more health care staff				65,4%	17		
Inspect fresh food outlets more regularly				19,2%	5		
Apply health regulations				15,4%	4		
Improve service at health facilities				53,8%	14		
Vaccinate/sterilize stray animals				0,0%	0		
Other (please specify)				11,5%	3		

Crèche							
Answer Options	Poor	Below average	Average	Above average	Excellent	Don't know	Response Count
Percentage	4%	4%	8%	66%	4%	14%	
Answer Options				Response Percent	Response Count		
Provide buildings for local crèches				66,7%	4		
Provide training and enrichment programmes				33,3%	2		
Support local crèches with educational materials				66,7%	4		
Other (please specify)				0,0%	0		

Youth development							
Answer Options	Poor	Below average	Average	Above average	Excellent	Don't know	Response Count
Percentage	48%	10%	8%	18%	0%	16%	
Answer Options				Response Percent	Response Count		

Provide / Support youth development programmes	76,7%	23
Provide employment	46,7%	14
Provide social health programmes	70,0%	21
Combat drug and substance abuse	56,7%	17
Provide sport and recreation facilities	60,0%	18
Employ a youth coordinator	30,0%	9
Other (please specify)	0,0%	0

Sport development							
Answer Options	Poor	Below average	Average	Above average	Excellent	Don't know	Response Count
Percentage	24%	2%	18%	34%	6%	16%	
Answer Options	Response Percent					Response Count	
Provide/support sport development programmes	72,2%					13	
Support local sport clubs	50,0%					9	
Encourage recreational sport	33,3%					6	
Other (please specify)	0,0%					0	

Tourism development							
Answer Options	Poor	Below average	Average	Above average	Excellent	Don't know	Response Count
Percentage	8%	0%	0%	2%	6%	84%	
Answer Options	Response Percent					Response Count	
Promote the tourism sector	100,0%					5	
Support local tourism organizations	40,0%					2	
Assist initiatives to generate jobs in the hospitality sector	40,0%					2	
Improve signage	40,0%					2	
Enhance celebration of heritage (all aspects)	20,0%					1	
Efficiency and helpfulness of Tourism Information Bureaus.	20,0%					1	
Other (please specify)	0,0%					0	

Which ONE of the following is the most important service that the Local Council must attend to in the next five years?		
Answer Options	Response Percent	Response Count
Economic development / Job creation	44,9%	22
Housing for low income families (subsidized housing)	44,9%	22
Gap Housing (family earning between R4000 - R15000 per month)	2,0%	1
Roads and storm water	2,0%	1
Electricity	0,0%	0
Potable water	2,0%	1
Sewerage	4,1%	2
Refuse removal	0,0%	0

Which ONE of the following is the most important service that Provincial and National Government must to attend to in the next five years?		
Answer Options	Response Percent	Response Count
Education	4,1%	2

Crime / Safety and Security	18,4%	9
Economic Development / Job Creation	63,3%	31
Sports	4,1%	2
Health	8,2%	4
Support to Emerging Farmers	2,0%	1
Support access to fishing quotas	0,0%	0

- Redelinghuys

Roads and streets							
Answer Options	Poor	Below average	Average	Above average	Excellent	Don't know	Response Count
Percentage	21,88%	31,25%	28,13%	12,50%	6,25%	0%	
Answer Options	Response Percent					Response Count	
Tarring of roads	76,9%					20	
Resurface roads (Improve quality of road surface)	34,6%					9	
Fixing of potholes	0,0%					0	
Sweeping of streets	3,8%					1	
Provide street names, traffic signs and markers	0,0%					0	
Build speed bumps	15,4%					4	
Other (please specify)	0,0%					0	

Street lights							
Answer Options	Poor	Below average	Average	Above average	Excellent	Don't know	Response Count
Percentage	15,63%	18,75%	37,50%	25%	3,13%	0%	
Answer Options	Response Percent					Response Count	
Installing street lights (none in street)	26,1%					6	
Provide additional street lights	39,1%					9	
Replace lights - faulty	26,1%					6	
Replace lights - too dim	43,5%					10	
Other (please specify)	0,0%					0	

Sidewalks							
Answer Options	Poor	Below average	Average	Above average	Excellent	Don't know	Response Count
Percentage	25%	18,75%	31,25%	21,88%	3,13%	0%	
Answer Options	Response Percent					Response Count	
Build additional sidewalks	58,3%					14	
Resurface existing sidewalks	37,5%					9	
Widen sidewalks	4,2%					1	
Keep sidewalks clean (Remove refuse)	8,3%					2	
Keep sidewalks clean (Remove weeds)	0,0%					0	
Other (please specify)	4,2%					1	



Storm water							
Answer Options	Poor	Below average	Average	Above average	Excellent	Don't know	Response Count
Percentage	12,50%	15,63%	15,63%	46,88%	6,25%	3,13%	
Answer Options	Response Percent					Response Count	
Provide storm water channel curbs	92,9%					13	
Keep storm water channel curbs and drains clean	0,0%					0	
Capacity of existing storm water channel curbs to be enlarged	0,0%					0	
Other (please specify)	7,1%					1	

Provision of electricity							
Answer Options	Poor	Below average	Average	Above average	Excellent	Don't know	Response Count
Percentage	15,63%	0%	9,38%	71,88%	3,13%	0%	
Answer Options	Response Percent					Response Count	
Replace faulty/ old reticulation infrastructure incl. meters	0,0%					0	
Speed-up provision of electrical connections	0,0%					0	
Provide additional reticulation infrastructure	12,5%					1	
Enlarge capacity (to prevent outages)	0,0%					0	
Reduce price of electricity	87,5%					7	
Restoration of connections after outages	0,0%					0	
Other (please specify)	12,5%					1	

Provision of water							
Answer Options	Poor	Below average	Average	Above average	Excellent	Don't know	Response Count
Percentage	0%	3,13%	6,25%	84,38%	6,25%	0%	
Answer Options	Response Percent					Response Count	
Provide additional infrastructure	0,0%					0	
Enlarge capacity (reservoirs or sources)	0,0%					0	
Maintain infrastructure (Fix leaks and faulty meters)	33,3%					1	
Speed-up provision of connections	0,0%					0	
Improve water quality	0,0%					0	
Reduce price of water	0,0%					0	
Improve access to water / far from nearest tap	0,0%					0	
Fix low water pressure	0,0%					0	
Restoration after pipe bursts	0,0%					0	
Other (please specify)	66,7%					2	

Provision of sanitation							
Answer Options	Poor	Below average	Average	Above average	Excellent	Don't know	Response Count
Percentage	3,13%	9,38%	12,50%	68,75%	6,25%	0%	

Answer Options	Response Percent	Response Count
Provide flush toilets & necessary infrastructure	33,3%	2
Speed-up provision of connections	16,7%	1
Enlarge sewer plant capacity	16,7%	1
Maintain infrastructure (Fix blockages)	0,0%	0
Attend to bad odours	0,0%	0
Speedy clearance of blockages	0,0%	0
Reduce price for sewerage services	0,0%	0
Other (please specify)	50,0%	3

#### Refuse removal

Answer Options	Poor	Below average	Average	Above average	Excellent	Don't know	Response Count
Percentage	0%	0%	3,13%	87,50%	9,38%	0%	

Answer Options	Response Percent	Response Count
Removing waste	100,0%	1
Cleaning and upkeep of street waste bins	0,0%	0
Provide more waste bins	0,0%	0
Combat illegal dumping	0,0%	0
Implement re-cycling	0,0%	0
Removal of garden waste	0,0%	0
Other (please specify)	0,0%	0

#### Recreational facilities and play parks

Answer Options	Poor	Below average	Average	Above average	Excellent	Don't know	Response Count
Percentage	12,50%	15,63%	9,38%	25%	3,13%	34,38%	

Answer Options	Response Percent	Response Count
Provide additional sport fields	7,7%	1
Upgrade existing sport facilities	23,1%	3
Provide shade at sport fields (plant trees)	0,0%	0
Relocate sport fields/ recreational facilities	0,0%	0
Clean and maintain sport fields	15,4%	2
Provide and maintain recreational equipment for children	0,0%	0
Make play parks safe for children	7,7%	1
Clean and maintain play parks	30,8%	4
Maintenance of municipal swimming pool	0,0%	0
Cleanliness of municipal swimming pool	7,7%	1
Other (please specify)	38,5%	5

#### Resorts: Caravan parks / Camping sites

Answer Options	Poor	Below average	Average	Above average	Excellent	Don't know	Response Count
Percentage	0%	0%	0%	12,50%	0%	87,50%	

Answer Options	Response Percent	Response Count
Keep terrain and buildings clean and tidy	0,0%	0
Maintain ablution facilities	0,0%	0
Provide security	0,0%	0
Provide shade and landscape facility	0,0%	0
Other (please specify)	100,0%	1

### Beautification (Open spaces/ Cemeteries / Streets)

Answer Options	Poor	Below average	Average	Above average	Excellent	Don't know	Response Count
Percentage	12,50%	28,13%	15,63%	34,38%	0%	9,38%	

Answer Options	Response Percent	Response Count
Clean and maintain Open Spaces	72,2%	13
Clean and maintain cemeteries	16,7%	3
Provide and maintain garden furniture (benches & bins)	5,6%	1
Plant trees and shrubs (landscape) cemeteries	11,1%	2
Plant trees and shrubs (landscape) along streets	27,8%	5
Clean and Maintain municipal buildings and infrastructure	5,6%	1
Other (please specify)	5,6%	1

### Libraries, Museums and Municipal buildings

Answer Options	Poor	Below average	Average	Above average	Excellent	Don't know	Response Count
Percentage	6,25%	12,50%	0%	53,13%	6,25%	21,88%	

Answer Options	Response Percent	Response Count
Provide community hall	40,0%	2
Improve library service	20,0%	1
Clean and maintain library	20,0%	1
Improve access to libraries	0,0%	0
Improve museum service	20,0%	1
Clean and maintain and develop museum	0,0%	0
Improve access to museums	0,0%	0
Appropriate use of municipal buildings and grounds	0,0%	0
Clean and maintain municipal buildings	20,0%	1
Other (please specify)	20,0%	1

### Traffic services

Answer Options	Poor	Below average	Average	Above average	Excellent	Don't know	Response Count
Percentage	3,13%	3,13%	0%	78,13%	3,13%	12,50%	

Answer Options	Response Percent	Response Count
Improve vehicle registrations and licencing	0,0%	0
Improve efficiency of vehicle licence renewals	0,0%	0

More visible patrolling	66,7%	2
Control those who speed / drive recklessly	66,7%	2
More friendly service	0,0%	0
Improve road-side support	0,0%	0
Other (please specify)	0,0%	0

Emergency services							
Answer Options	Poor	Below average	Average	Above average	Excellent	Don't know	Response Count
Percentage	21,88%	15,63%	0%	50%	3,13%	9,38%	
Answer Options	Response Percent					Response Count	
Improve availability	84,6%					11	
Improve reaction times	76,9%					10	
Improve training of emergency staff	0,0%					0	
Improve support during emergencies	0,0%					0	
Other (please specify)	0,0%					0	

Building Plan Approval and Control							
Answer Options	Poor	Below average	Average	Above average	Excellent	Don't know	Response Count
Percentage	3,13%	0%	3,13%	37,50%	6,25%	50%	
Answer Options	Response Percent					Response Count	
Shorten time taken to approve building plans	0,0%					0	
Undertake compliance inspections of completed buildings	0,0%					0	
Improve awareness of requirements to submit building plans	100,0%					1	
Improve awareness of procedure to submit building plan applications	0,0%					0	
Improve access to status of applications	0,0%					0	
Other (please specify)	0,0%					0	

Land Use Planning and Control							
Answer Options	Poor	Below average	Average	Above average	Excellent	Don't know	Response Count
Percentage	0%	9,38%	0%	31,25%	0%	59,38%	
Answer Options	Response Percent					Response Count	
Improve land use (re-zoning and subdivision) applications process	0,0%					0	
Improve clarity re land use application procedure and requirements	0,0%					0	
Improve access to status of land use applications	0,0%					0	
Improve procedure to issue zoning certificates	0,0%					0	
Improve correctness of zoning certificates	0,0%					0	
Improve awareness of spatial development framework provisions	0,0%					0	
Improve awareness of town plans	0,0%					0	
Improve the process of land transactions and letting	0,0%					0	
Improve the process of property valuation	0,0%					0	
Improve property tax administration	0,0%					0	
Other (please specify)	0,0%					0	

Administration and communication							
Answer Options	Poor	Below average	Average	Above average	Excellent	Don't know	Response Count
Percentage	12,50%	6,25%	3,13%	62,50%	6,25%	9,38%	
Answer Options	Response Percent					Response Count	
Improve response to general enquiries	25,0%					1	
Improve communication with the public	25,0%					1	
Improve financial administration	25,0%					1	
Improve skills to solve account queries	0,0%					0	
Improve internal communication	0,0%					0	
Alleviate financial burden of unemployed debtors	0,0%					0	
Ward councillor does not serve the community	50,0%					2	
Improve the effectiveness of ward councillors	0,0%					0	
Other (please specify)	0,0%					0	

Municipal staff							
Answer Options	Poor	Below average	Average	Above average	Excellent	Don't know	Response Count
Rating	1	1	0	27	3	0	32
Percentage	3,13%	3,13%	0%	84,38%	9,38%	0%	
Answer Options	Response Percent					Response Count	
Improve telephone etiquette	33,3%					1	
Improve friendliness	33,3%					1	
Improve helpfulness	33,3%					1	
Improve skills	33,3%					1	
Improve respectfulness	0,0%					0	
Improve knowledge (related to municipality and its functions)	0,0%					0	
Other (please specify)	33,3%					1	
Answer Options	Response Percent					Response Count	
Staff member at Office	12,5%					4	
Public meetings	3,1%					1	
Community Development Workers	0,0%					0	
Pamphlets and newsletters	65,6%					21	
SMS	15,6%					5	
Local Newspapers	0,0%					0	
Municipal Accounts	0,0%					0	
Municipal Website	0,0%					0	
Social Media (Facebook, Twitter)	3,1%					1	
Other (please specify)	0,0%					0	

Housing							
Answer Options	Poor	Below average	Average	Above average	Excellent	Don't know	Response Count
Percentage	31,25%	15,63%	25%	3,13%	0%	25%	

Answer Options	Response Percent	Response Count
Provide more housing for low income families	95,8%	23
Support residents to fix badly built subsidized (before 1996) houses	20,8%	5
Provide more GAP housing	0,0%	0
Too few rooms	0,0%	0
Provide ablution facilities	8,3%	2
Other (please specify)	0,0%	0

### SMME/Local Economic Development

Answer Options	Poor	Below average	Average	Above average	Excellent	Don't know	Response Count
Percentage	0%	0%	3,13%	0%	0%	96,88%	

Answer Options	Response Percent	Response Count
Provide land for emerging farmers	100,0%	1
Facilitate partnerships with commercial farmers	0,0%	0
Provide trading stalls	0,0%	0
Property tax rebates for small businesses	0,0%	0
Provide beehives for small manufacturing enterprises	0,0%	0
Provide technical support	0,0%	0
Provide infrastructure for fishermen (slipway)	0,0%	0
Assist fishermen with acquisition of equipment/boats	0,0%	0
Other (please specify)	0,0%	0

### Unemployment

Answer Options	Poor	Below average	Average	Above average	Excellent	Don't know	Response Count
Percentage	34,38%	28,13%	6,25%	9,38%	0%	21,88%	

Answer Options	Response Percent	Response Count
Provide more jobs	100,0%	22
Provide/Support skills development programmes	4,5%	1
Provide/Support adult education	4,5%	1
Other (please specify)	0,0%	0

### Education

Answer Options	Poor	Below average	Average	Above average	Excellent	Don't know	Response Count
Percentage	3,13%	9,38%	21,88%	62,50%	3,13%	0%	

Answer Options	Response Percent	Response Count
Improve access to education	27,3%	3
Support maintenance of educational facilities	54,5%	6
Provide financial assistance to educational institutions	18,2%	2
Provide after school care facilities	27,3%	3
Other (please specify)	0,0%	0

Health issues							
Answer Options	Poor	Below average	Average	Above average	Excellent	Don't know	Response Count
Percentage	9,38%	15,63%	25%	40,63%	3,13%	6,25%	
Answer Options	Response Percent					Response Count	
Provide buildings for clinics	68,8%					11	
Employ more health care staff	18,8%					3	
Inspect fresh food outlets more regularly	18,8%					3	
Apply health regulations	0,0%					0	
Improve service at health facilities	12,5%					2	
Vaccinate/sterilize stray animals	0,0%					0	
Other (please specify)	0,0%					0	

Crèche							
Answer Options	Poor	Below average	Average	Above average	Excellent	Don't know	Response Count
Percentage	18,75%	3,13%	0%	18,75%	3,13%	56,25%	
Answer Options	Response Percent					Response Count	
Provide buildings for local crèches	85,7%					6	
Provide training and enrichment programmes	0,0%					0	
Support local crèches with educational materials	0,0%					0	
Other (please specify)	14,3%					1	

Youth development							
Answer Options	Poor	Below average	Average	Above average	Excellent	Don't know	Response Count
Percentage	34,38%	9,38%	12,50%	15,63%	3,13%	25%	
Answer Options	Response Percent					Response Count	
Provide / Support youth development programmes	68,4%					13	
Provide employment	52,6%					10	
Provide social health programmes	15,8%					3	
Combat drug and substance abuse	10,5%					2	
Provide sport and recreation facilities	5,3%					1	
Employ a youth coordinator	0,0%					0	
Other (please specify)	0,0%					0	

Sport development							
Answer Options	Poor	Below average	Average	Above average	Excellent	Don't know	Response Count
Percentage	28,13%	3,13%	0%	28,13%	9,38%	31,25%	
Answer Options	Response Percent					Response Count	
Provide/support sport development programmes	100,0%					10	
Support local sport clubs	0,0%					0	

Encourage recreational sport	10,0%	1
Other (please specify)	0,0%	0

Tourism development							
Answer Options	Poor	Below average	Average	Above average	Excellent	Don't know	Response Count
Percentage	12,50%	15,63%	3,13%	12,50%	6,25%	50%	
Answer Options	Response Percent					Response Count	
Promote the tourism sector	100,0%					10	
Support local tourism organizations	10,0%					1	
Assist initiatives to generate jobs in the hospitality sector	10,0%					1	
Improve signage	10,0%					1	
Enhance celebration of heritage (all aspects)	0,0%					0	
Efficiency and helpfulness of Tourism Information Bureaus.	0,0%					0	
Other (please specify)	0,0%					0	

**Which ONE of the following is the most important service that the Local Council must attend to in the next five years?**

Answer Options	Response Percent	Response Count
Economic development / Job creation	37,5%	12
Housing for low income families (subsidized housing)	34,4%	11
Gap Housing (family earning between R4000 - R15000 per month)	0,0%	0
Roads and storm water	28,1%	9
Electricity	0,0%	0
Potable water	0,0%	0
Sewerage	0,0%	0
Refuse removal	0,0%	0

**Which ONE of the following is the most important service that Provincial and National Government must to attend to in the next five years?**

Answer Options	Response Percent	Response Count
Education	21,9%	7
Crime / Safety and Security	37,5%	12
Economic Development / Job Creation	37,5%	12
Sports	0,0%	0
Health	0,0%	0
Support to Emerging Farmers	3,1%	1
Support access to fishing quotas	0,0%	0

### 7.5.10 NEEDS IDENTIFIED BY Ward 5 FOR THE FOURTH GENERATION IDP

COMMUNITY DEVELOPMENTAL NEEDS IDENTIFIED AND ADDRESSED			
FINANCIAL SERVICES	CORPORATE SERVICES	TECHNICAL SERVICES	OFFICE OF THE MUNICIPAL MANAGER
Households receive indigent grants (Can't be quantified per ward)	Bergrivier "estuary"	Sewerage Redelinghuys R 10.9 m	Light festival Redelinghuys



Eendekuil Payment rate: Klippiessdorp-61.52 %, Industrial area-108.04 %, Mun.area-40.21 %, RDP houses-53.66 %	Animal clinic visits 3 years	Sewerage Eendekuil R 4.4 m	Thusong program
Redelinghuys Payment rate: Mun.area-100.45 %, RDP area-69.11 %	Library programmes	Floodlights Redelinghuys	Climate change plan
	Uniform zoning scheme	Construction of streets	E-Centre Eendekuil
	Law enforcement	Bridge in Eendekuil	Women's day in Piket-benberg
	BTO-Marketing Piket-benberg	Upgrading of electricity network	Golden games
		Replace conventional electricity meters with pre-paid	
		Construction Katrivier-pipeline R 1.13 m (Eendekuil)	
		Storm water plans	
		Roads resealed/ paving	
<b>COMMUNITY DEVELOPMENTAL NEEDS IDENTIFIED, BUT NOT YET ADDRESSED</b>			
<b>FINANCIAL SERVICES</b>	<b>CORPORATE SERVICES</b>	<b>TECHNICAL SERVICES</b>	<b>OFFICE OF THE MUNICIPAL MANAGER</b>
	Incorporate Redelinghuys in sport structure	Cleaning of cemetery and illegal dumping of waste (Redelinghuys)	Transport to larger towns
	Speed calming at entrance of town – Eendekuil	Control over "land fill site" Redelinghuys	Youth survey
	Public toilettes in Redelinghuys (Identify land)	Maintenance of roads (Aandblom, Kotze, Keerom) Redelinghuys	WCBDC-MOU
	Replace stop signage Redelinghuys	Public toilettes in Redelinghuys	Local Drug Action Committee
		Ground water investigation Eendekuil	
		Upgrade Reservoir-larger store- capacity Eendekuil	
		Cover at community hall Eendekuil	
		Pavements Eendekuil	
		Bus route at low costing houses	
		Toilet facilities at the cemetery Eendekuil	
<b>NEW COMMUNITY DEVELOPMENTAL NEEDS IDENTIFIED</b>			
<b>FINANCIAL SERVICES</b>	<b>CORPORATE SERVICES</b>	<b>TECHNICAL SERVICES</b>	<b>OFFICE OF THE MUNICIPAL MANAGER</b>
Write of debts (Eendekuil)	Netball court needs upgrade, cricket court (Eendekuil)	Taxi rank facilities and toilet (Eendekuil)	Small farmers (Eendekuil)
	Library programmes (Eendekuil)	Sewerage system (Eendekuil)	Drop-outs, crime (Eendekuil)

	Speed calming (Eendekuil)	Toilets in Noord- street: gate “vaalblok” (Eendekuil)	Job creation (Eendekuil)
	Equipment for cricket, netball, chess, pool, darts (Redelinguys)	Roads not finished yet (Eendekuil)	More awareness campaigns for youth
	Law enforcement (Redelinguys)	Fencing of storm water channel (Eendekuil)	Installation of landlines (Redelinguys)
	Upgrading of tennis court, netball court and “jukskei” court (Redelinguys)	Sewerage system to be fixed (Eendekuil)	Small businesses (Redelinguys)
	Redelinguys pavilion at sport grounds	Church grounds (Eendekuil)	Local development (Redelinguys)
		Bus stop (Redelinguys)	Day-care centre (Redelinguys)
		Corner light Chrismathys lane (Redelinguys)	Community hall too expensive (Eendekuil)
		Refuse bins at homes (Redelinguys)	
		Beautification of entrance - Redelinguys	
		Tarring of roads in Aandblom, Engelbrecht and Smit streets	
		Pavements in Oelofberg street and Aandblom street (Redelinguys)	
		Upgrade drains at HOP houses (Redelinguys)	
		Disabled access for disabled people (Eendekuil)	
		Community hall needs curtains (Eendekuil)	
		Kitchen cutlery and crockery (Eendekuil)	
		Rental of community hall too expensive - Redelinguys	
		Swimming pool and fencing (Redelinguys)	
		Fencing of sport ground (Redelinguys)	
		Swimming pool	
		Upgrading of playground (Redelinguys)	
		Speed bumps in Oelofberg- Chrismathys laan, Aandblom and Sonskyn str (Redelinguys)	
<b>OTHER GOVERNMENT DEPARTMENTS</b>			
<b>DEPARTMENT OF EDUCATION</b>	<b>DEPARTMENT SOCIAL SERVICES</b>	<b>DEPARTMENT HUMAN SETTLEMENT</b>	<b>DEPARTMENT OF TRANSPORT PUBLIC WORKS</b>

Building of crèche and aftercare centre Eendekuil	Centre for elders (Eendekuil)	Replace "pit latrines" Eendekuil	Extension of highway Eendekuil
	Present teenage pregnancy programmes (Eendekuil)	Housing for farm-workers Piket-bo-berg	Bridge & road (Eendekuil)
	Building for soup kitchen (Redelinghuys)	Housing (Eendekuil)	
		Housing (Redelinghuys)	
		Outside toilets to be build inside houses	

### 7.5.11 BUDGET & CAPITAL PROGRAMME: 2017/18 – 2019/2020

This section outlines the budgetary provision for Ward 5. It should be noted that a single amount is being budgeted for the development of streets, pavements and street lights. Once the budget has been approved in May 2017, the Directorate Technical Services will develop an annual programme for pavements, streets and street lights in each ward. This draft programme will be communicated with the ward committees as to ensure that the needs as expressed by the community on where these infrastructure needs to be developed, are aligned. This programme will then be worked into the ward plan.

The following is the capital programme for Ward 5:

Dept Description	PROJECT_OWN_DESCRIPTION	WYK	Requested BUD1819	Requested Funding 2018/19	Requested BUD1920	Requested Funding 2019/20	Requested BUD2021	Requested Funding 2020/21
Solid Waste Removal	<b>Refuse collection point (RH/DKB/EK)</b>	5,6		el		el	1 900 000	el
Roads	<b>Construction/Design of roads</b>	5	175 000	cr	200 000	cr	300 000	cr
Roads	<b>Construction/Design of roads</b>	5	175 000	cr	200 000	cr	300 000	cr
Roads	<b>Cement ditches in Aurora</b>	5	60 000	cr	60 000	cr	80 000	cr
Roads	<b>Reseal/Construction of streets</b>	5	100 000	el				

Capital Items	Description		2018/19	2019/20	2020/21
Ward projects					
Teenage pregnancies	Teenage pregnancies		2018/19 still to be determined		
Drug abuse campaign	Drug abuse campaign				
Play parks for children	Play parks for children				
Department of Transport					

Redelinghuys/Elands bay Road	Project cost R 90 000 000		2018/19	2019/20	
Redelinghuys/ Aurora	Regravel				
Department of Education					
Redelinghuys Primary School					2020/2021
Eendekuil Primary School					2020/21

## 7.5.12 EMERGENCY NUMBERS AND OTHER CONTACT DETAILS

### WARD 5

SAPS Eendekuil	022 942 1620
SAPS Rdelinghuys	022 962 1620
Eendekuil clinic	022 942 1562
Redelinghuys clinic	022 962 1810
Ambulance Piketberg	10177
Fire Department	10177
Municipality Eendekuil office	022 942 1780
Municipality Redelinghuys office	022 962 1605
Counselling office (Dept of Social Development)	022 913 1156 or SAPS
Schools –Eendekuil Primary School	022 942 1760
-Redelinghuys Primary School	022 962 1725
-Redelinghuys Primary School	022 962 1660

### **FIRE EMERGENCY**

**10177**