



BERGRIVIER MUNICIPALITY

WARD PLAN WARD 6 2017 - 2022

7.6.1 PURPOSE OF WARD PLAN

The Fourth Generation IDP (Chapter 4) has significant updated information on the demographic profile of the Bergrivier municipal area. This information forms the baseline to make informed decisions on the future of Bergrivier and therefore defining the vision. One of the most serious constraints currently in the drafting of an IDP is the lack of detailed information on a ward level. Most of the new information obtained, is only available on a municipal level. The problem is further exacerbated by the fact that ward boundaries are political boundaries and could potentially (and did, in preparation for the 2016 elections) change every 5 years.

For these reasons, the baseline information of ward plans will be the baseline information of the relevant local communities and rural areas. This information may at the time of approving the Fourth Generation IDP not be complete and will be updated continuously during the term of the IDP. A survey is currently in the final phase of completion and will enable the municipality to determine the estimated number of people and households in each ward. This will contribute to the development of a more reliable demographic profile for each ward.

However, to ensure a comparative analysis, the 2011-statistics (StatsSA) will form the base of an exercise to determine an estimated, projected demographic profile. The study undertaken by the Department of Agriculture in 2016 on households in the rural areas, will also be incorporated into a complete profile. It is therefore important to note that the ward plan is a collective of information of settlements/towns in the ward and the rural areas. The purpose of the ward plan is not to provide additional information to the situational analysis as contained in Chapter 4 of the IDP, but rather to:

- empower ward councillors and their ward committees with a tool to understand the ward;
- strategically plan the future of the wards, and
- monitor progress being made.

For the aforementioned purposes, the ward plans contain:

- A profile of the ward committee members with contact details;
- A brief demographic profile of the ward;
- A brief profile on the status quo of infrastructure of the ward;
- The needs identified by the community during the Third Generation IDP (that has not been completed due to budgetary constraints) and the needs identified in preparation of the Fourth Generation IDP;
- The provision in the capital budget for the ward for the 2017/18, 2018/19 and 2019/20 medium term budgetary framework; and
- Emergency and other important information for the residents in the ward.

Any changes to the ward plans during the year will therefore only affect the refinement of the demographic profile of towns/settlements and not any of the core elements of the IDP, including the vision, strategic goals and objectives, needs identified by the community and the budget provision for the ward.

7.6.2 WARD COMMITTEE MEMBERS



BERGRIVIER

We serve with pride.

Know your ward committee

A PROSPEROUS COMMUNITY WHERE ALL WANT TO LIVE, WORK, PLAY AND LEARN IN A DIGNIFIED MANNER.

WARD 6 Predominantly rural and comprises the towns of Aurora, Noordhoek and Dwarskerbos

ROLES AND RESPONSIBILITIES OF WARD COMMITTEES, COUNCILLOR AND COMMUNITY

WARD COMMITTEE


- Is made up of representatives of a particular ward, is the representative of the ward, and not politically aligned.
- Increases the participation of local residents in municipal decision making.
- Can identify and initiate projects to improve the lives of people in the ward e.g. IDP, Budget etc.
- Can monitor the performance of the municipality and raise issues of concern to the local Ward Councillor.
- For accountability purposes, ward committee members are required to hold their sector report meetings etc.

COMMUNITY


- Should be responsible citizens by actively participating in the affairs of the municipality.
- Should take charge of their livelihood e.g. schools, clinics, community halls and libraries.

WARD COUNCILLOR

- Is the chairperson of the ward committee.
- Is responsible for arranging a schedule and calling ward Committee meetings.
- Is responsible to hold community report back meetings.
- Works with the ward committee to ensure that there is an annual plan of activities.
- Is responsible for handling service delivery queries and complaints in the ward.
- Is responsible for addressing service delivery issues emanating from ward committee meetings.
- Is fully involved in all community activities that is for the ward committee.



Cllr Audrey Small
Ward Councillor (Ward 6)
081 073 9918/022 913 1370
asmal@bergmun.org.za




BREGAT COUDIN B
Youth and Child Development
Contact Number: 082 919 9191



EACHEL DINE
Finance
021 913 1370
edine@bergmun.org.za



JOHANNES BASSON
021 913 1370
jbasson@bergmun.org.za




JACOBUS C. SIEP
021 913 1370
jsiep@bergmun.org.za



Bruno van der Merwe
021 913 1370
bvdmerwe@bergmun.org.za




Alea van der Merwe
021 913 1370
avdmerwe@bergmun.org.za




MICHELLE STEIN
021 913 1370
mstein@bergmun.org.za



MARIEKA VANHOEK
021 913 1370
mvanhoek@bergmun.org.za



JOHANNES BOHRA
021 913 1370
jbohra@bergmun.org.za



GERON BOCKEN
021 913 1370
gbocken@bergmun.org.za

ROLE OF COMMUNITY DEVELOPMENT WORKERS (CDWS) IN SUPPORTING WARD COMMITTEE FUNCTIONALITY CDWS SHOULD:

- Be ex-officio members of ward committees;
- Serve as information resource persons and complement the work of ward committees and Ward Councillors;
- Render administrative support to ward committees, as determined by the Municipality, e.g. drafting of minutes;
- Monitor ward committee functionality through attendance of scheduled ward committee meetings;
- Provide advice and support to ward committees on any service delivery issues within the respective wards;
- Support with the identification and facilitation of community development projects;
- Support with the mobilization of communities and ensure meaningful participation in the Integrated Development Plan (IDP) and Local Economic Development (LED) processes and;
- Increase attendance & meaningful participation in the Ward Councillor Quarterly Community Report Back meetings through active mobilization of communities.

USEFUL BERGRIVIER MUNICIPALITY NUMBERS	
Site visits by Assessment Officers	021 913 1700
Site visits by Valuation Officers	021 913 1710
Electoral Office	081 273 2294
Local Govt Buildings	021 913 2770
Water & Sewerage	081 273 2663
Beaumont Campsite	021 760 9144
Parade	081 071 8240
Site Visits to the site	021 913 1742
Town Clerk	021 760 9070
Assess. Clerk	021 760 1886
SAPS Local Unit	021 760 8033
Amateur Sports & Recreation Org.	021 713 4870
FF in the park branch	081 273 4139
Case calling a Bus (Days of Operation to be advised - Annex 6)	021 913 1700
SAP Suburb 5	021 913 1440
Suburb 6 - Annex 6 High Suburb 1	021 913 1440
From above to Primary 7 to Road	021 760 9081

EMERGENCY NUMBERS:

FIRE 10177

AMBULANCE 10177

POLICE 10111

3 | Page

7.6.3 PROFILE OF WARD 6

7.6.3.1 Geographical Description of Ward 6

Ward 6 is predominantly rural and comprises the towns of Aurora, Noordhoek and Dwarskersbos and the rural areas between these settlements.

Aurora is a town on the west coast of South Africa situated 43 kilometers north-west of Piketberg and 29 km south of Redelinghuys. Established in 1906, it was named after the Roman goddess of dawn. Aurora lies against the mountain at the foot of the western flank of the Piketberg Mountain and is a typical Sandveld village. It is full of character, where life seems uncomplicated yet satisfying. The town's reputation as a wonderful space in which to retire or escape the rat race has strengthened and slow development of buildings has ensured that it remains

its village feel. After the winter rains, the area is transformed into a paradise of flowers. A quaint town square and Sandveld houses, Aurora is a must in flower season when pink, yellow and orange flowers are everywhere to be seen

Dwarskersbos, a popular holiday resort, is situated 10km north of Velddrif, on the Atlantic seaboard. Its splendid clean, sandy beach stretches for many kilometres. Over the years the town has also become known for its angling, water sports and swimming. In the winter months, whales and rare Heaviside Dolphin can be seen near the coast- a popular attraction to many visitors.

Noordhoek is part of the town of Velddrif, but forms part of Ward 6. Noordhoek is a remnant of the apartheid dispensation and is also one of the poorest areas in Bergrivier municipal area. Noordhoek is characterized by low cost housing and informal housing.

The following map is a demarcation map of Ward 6:

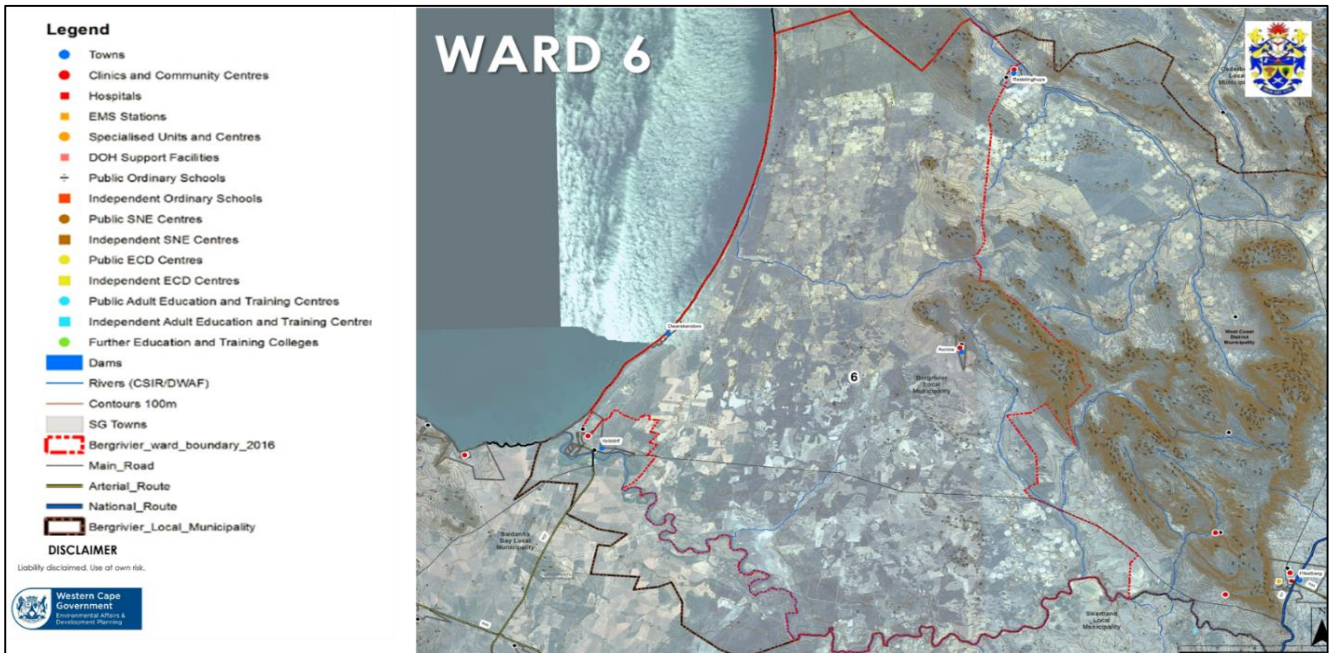
Area of Ward 6:

Aurora, Noordhoek and Dwarskersbos and the rural areas in-between

“Dwarskersbos is perched on the magnificent West Coast of the Western Cape Province of South Africa, where the icy turquoise waters of the Atlantic Ocean lap mile after untouched mile of shells and sand. This entire region is known for the fishing villages that have dotted the coastline for generations, establishing their own unique culture that is such an integral part of the South African identity today.”

<http://www.savenues.com/attractionswc/dwarskersbos.ph>

P



7.6.3.2 Demographic Profile

The following is the demographic profile of Ward 6 based on a variety of sources, including the Community Survey of 2016, MERO 2015 and the survey conducted by the municipality in collaboration with the West Coast District Municipality, StatsSA and Provincial Treasury as at March 2017. Note that not all information is available per ward, and in the case of population statistics, it should be noted that the 2011 StatsSA statistics are based on the previous ward boundaries.

Population & Household

STANDARD DISCLAIMERS APPLY Julien.Rumbelow@westerncape.gov.za
 Estimates of 2022 Ward data based on the municipal change 2011 to 2016

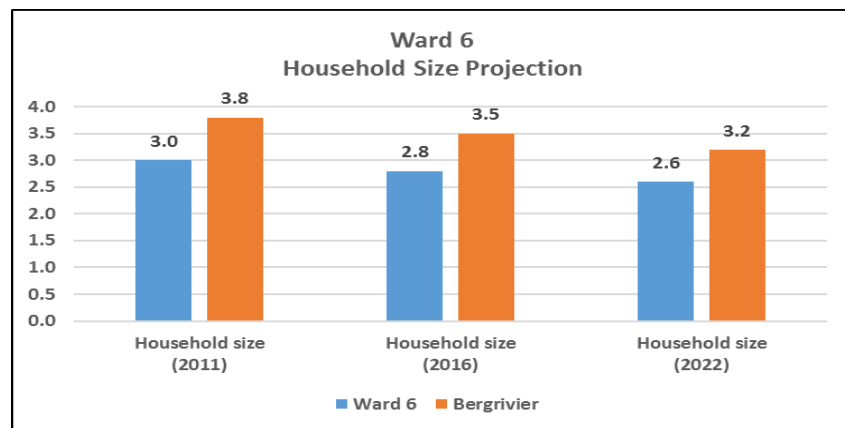
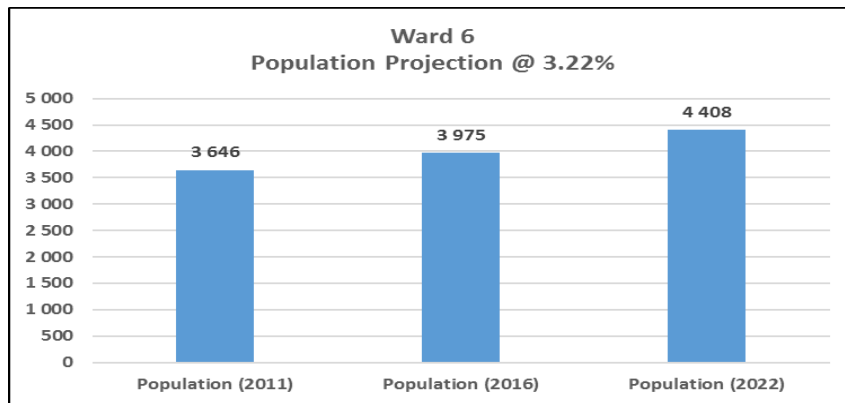
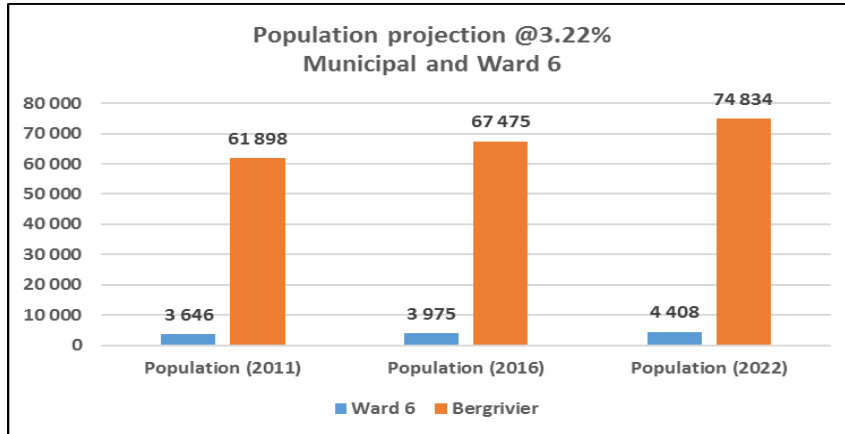
	2011 Actual			2016 Actual / Estimate			2022 Estimate			Actual / Estimate	
	Population (2011)	Households (2011)	Household size (2011)	Population (2016)	Households (2016)	Household size (2016)	Population (2022)	Households (2022)	Household size (2022)	pop. growth 2011-2016 per year	hh. growth 2011-2016 per year
Western Cape (WC)	5 822 734	1 634 000	3.6	6 279 730	1 933 876	3.2	6 875 714	2 367 230	2.9	1.52%	3.43%
West Coast DM	391 766	106 780	3.7	436 403	129 862	3.4	496 731	164 238	3.0	2.18%	3.99%
Bergervier	61 897	16 275	3.8	67 474	19 072	3.5	74 834	23 070	3.2	1.74%	3.22%
ward 1	10 508	2 676	3.9	11 455	3 136	3.7	12 704	3 793	3.3	1.74%	3.22%
ward 2	5 210	1 238	4.2	5 679	1 451	3.9	6 299	1 755	3.6	1.74%	3.22%
ward 3	8 727	2 480	3.5	9 513	2 906	3.3	10 551	3 515	3.0	1.74%	3.22%
ward 4	9 460	1 975	4.8	10 312	2 314	4.5	11 437	2 800	4.1	1.74%	3.22%
ward 5	13 015	2 988	4.4	14 188	3 502	4.1	15 735	4 236	3.7	1.74%	3.22%
ward 6	3 646	1 212	3.0	3 975	1 420	2.8	4 408	1 718	2.6	1.74%	3.22%
ward 7	11 332	3 705	3.1	12 353	4 342	2.8	13 700	5 252	2.6	1.74%	3.22%
TOTAL	61 898	16 274	3.8	67 475	19 071	3.5	74 835	23 069	3.2	1.74%	3.22%

Notes:
 a. Actual data from Census 2011 or Community Survey 2016.
 e. Estimate. Based on assumed equal pro-rata growth across all wards to a known municipal total in 2016 then continuing unchanged. Check against GIS pics.
 i. Totals may not sum to 100% due to rounding.
 ii. The WCG Price Waterhouse Coopers Study (PWC, 2014) on WC Population estimated Bergervier's 2022 population at 72 375. The data above shows Bergervier's population estimated at 74 835 in 2022 based on the observed 2011-2016 growth continuing unchanged from the 2016 ward estimates.
 iii. The 2014 PWC Study estimated the total Bergervier population at 66 847 in 2016 whereas Stats SA Community Survey measured this at 67 475.

source: Stats SA (2011)

Source: StatsSA 2011

Population & Household Projections (Based on above population table. Source: StatsSA2011)



Indigent Households

The municipality currently do not have statistics available of indigent households per ward. However, approximately 25% of all households in Bergrivier Municipal Area are indigent.

Population Groups

Population Groups 2011

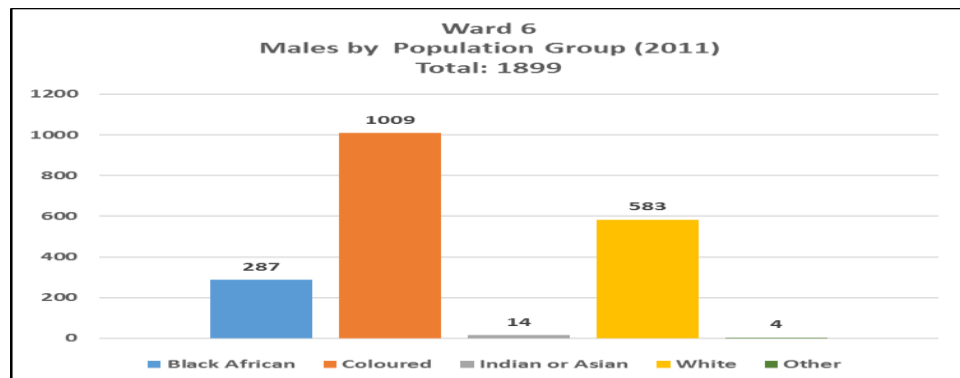
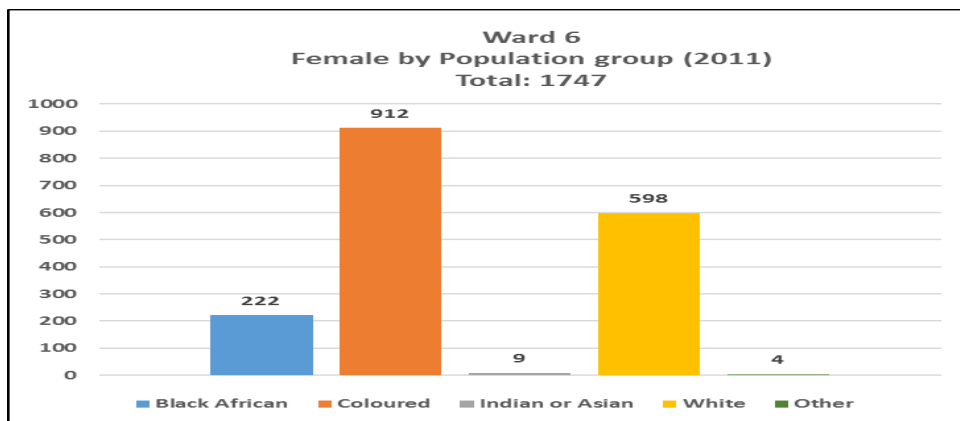
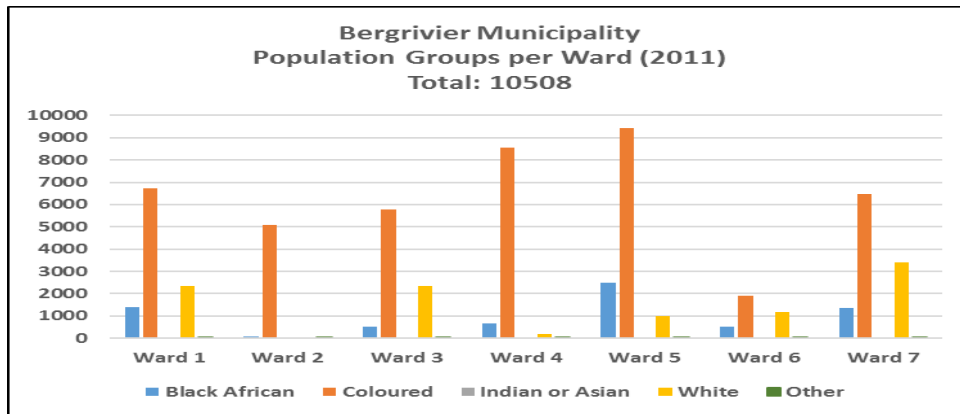
Statistics South Africa
 Descriptive_Electoral_Wards
 Gender by Geography by Population group
 for Person weighted

	Black African	Coloured	Indian or Asian	White	Other	Total
Western Cape	1912547	2840404	60761	915053	93969	5822734
DC1: West Coast	64110	260850	2181	61527	3098	391766
WC011: Matzikama	5705	50185	397	9968	892	67147
WC012: Cederberg	6308	37651	171	5462	175	49768
WC013: Bergrivier	7001	43915	256	10456	269	61897
Ward 1	1385	6712	51	2336	24	10507
Ward 2	67	5097	13	5	28	5209
Ward 3	511	5771	41	2345	59	8726
Ward 4	663	8540	41	175	41	9461
Ward 5	2509	9419	32	1011	44	13015
Ward 6	510	1922	24	1181	9	3646
Ward 7	1357	6455	53	3403	64	11333

Created on 17 May 2017
 Statistics South Africa: Web page: www.statssa.gov.za
 Support: info@statssa.gov.za
 Copyright © 2010 Statistics South Africa. All rights reserved.

Source: StatsSA 2011

(Based on above population table. Source: StatsSA2011)



The following statistics have been obtained through the client satisfaction survey that is important for a ward. The household questionnaire survey was based on an area systematic proportional sample of at least 10 percent of all urban households. All urban settlements were subdivided into smaller homogeneous sub-areas based on population and housing characteristics. The percentage of households sampled in each town was compared to the 2011 census figures as well as the StatsSA Dwelling Frame data (2015). The field work for the household survey was undertaken by CK Rumboll and Partners and the tabulations by Prof. Larry Zietsman: A questionnaire was completed at each of the selected dwelling units. This questionnaire included questions about the demographic characteristics of household members, duration of residential occupancy and origin of previous residence if duration of residence was 5 years or less, as well as questions pertaining to the dwelling unit, such as type and ownership.

The geographical distribution of sampled households and sample size percentages were mapped to evaluate the coverage and representativeness of the sample. Based on this evaluation fieldworkers were directed to areas that appeared to have been overlooked. The survey was primarily designed to provide a rapid assessment of the population size in the various urban settlements of the Bergrivier Municipality. Consequently, the data does not contain information to develop detailed demographic and socio-economic profiles of the towns.

An overview of Bergrivier is first important as to contextualize each ward. The average growth rate of the urban population in the Bergrivier Municipality was 4.0% per annum. Dwarskersbos has the highest growth rate of all the towns (12.6%). This high growth rate was confirmed by the 2015 StatsSA Dwelling Frame data.

Table: Comparison of population growth rates per town

Urban Settlements	Compound Annual Growth Rates
Main Town	2017 Questionnaire Survey (2011-2017)
Aurora	5.3
Dwarskersbos	12.6
Eendekuil	2.6
Goedverwacht	4.7
Piketberg	2.8
Porterville	1.9
Redelinghuys	3.6
Velddrif	5.6
Wittewater	5.9
Other Small Places	5.5
Total	4.0

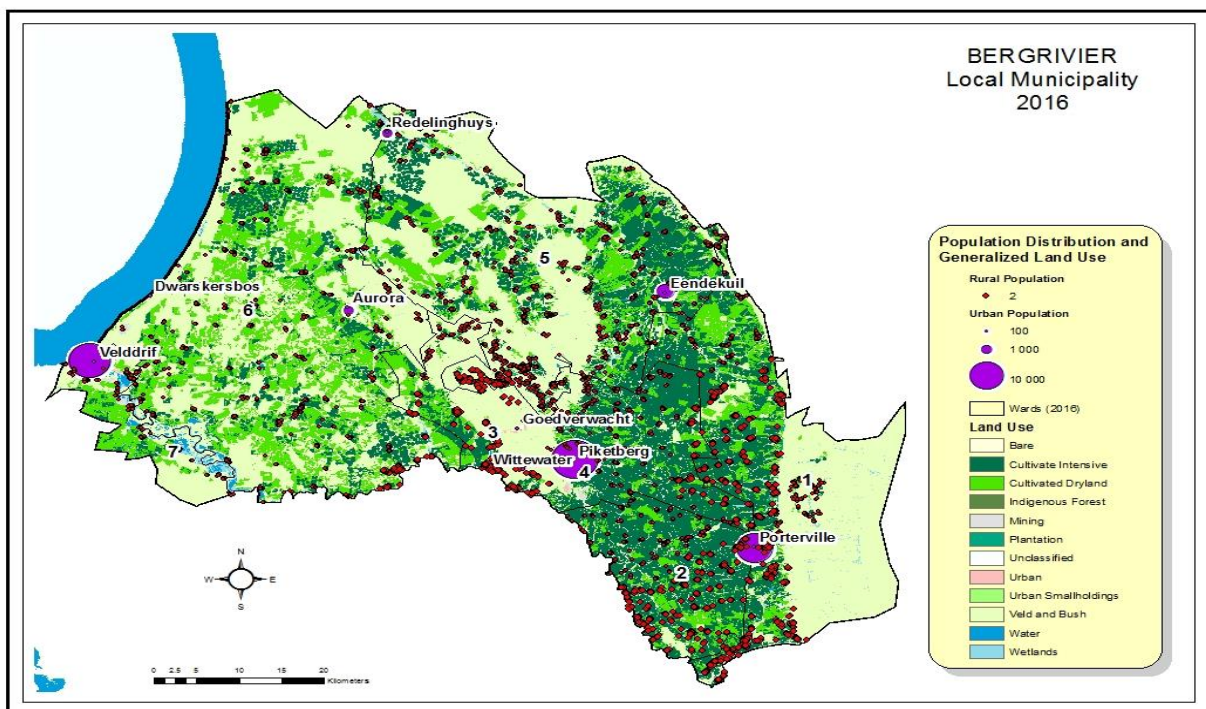
ESTIMATES OF 2017 WARD POPULATION TOTALS

The ward totals were estimated using the 2016 Community Survey totals per municipality and the distribution of dwellings according to the 2015 Dwelling Frame data. In general the population is concentrated in wards 2, 3 and 4. These three include the three largest towns, namely Velddrif, Piketberg and Porterville. Not only are they the most populous, but also have the largest concentrations of urban people. Velddrif is split between 6 and 7, Piketberg between 3 and 4 and Porterville between 1 and 2. The predominantly rural wards are wards 1 and 5.

Table: Bergrivier Municipality – 2017 Estimates of ward population by area type

Ward ID	Rural	Rural Percentage	Urban	Urban Percentage	Total Population
10103001	2934	46.4	3394	53.6	6329
10103002	1530	15.2	8522	84.8	10052
10103003	1897	18.8	8217	81.2	10114
10103004	0	0	15245	100	15245
10103005	3506	52.1	3222	47.9	6728
10103006	1223	9.8	11301	90.2	12524
10103007	279	4.3	6202	95.7	6481
Total	11371	16.9	56103	83.1	67474

Note: Estimated from StatsSA 2016 Community Survey Data and 2015 Dwelling Frame data



Demographic characteristics of the urban population by ward.

WARD PLAN: WARD 6 – FOURTH GENERATION IDP 2017 - 2022

Table: Percentage and average age distribution of the urban population by ward

Ward	0 - 5 years	6 - 10	11 - 20	21 - 40	41 - 60	> 60 years	Total	Average Age (years)
1	3.5	5.6	10.1	23.7	33.3	23.7	100.0	42.4
2	10.0	10.1	17.2	28.4	24.5	9.8	100.0	31.2
3	6.8	8.5	13.2	26.6	28.3	16.6	100.0	36.5
4	9.4	12.5	16.6	28.2	23.7	9.6	100.0	30.7
5	15.3	10.8	10.2	27.8	24.4	11.4	100.0	31.3
6	4.0	9.1	10.9	18.2	28.1	29.6	100.0	42.7
7	7.7	7.9	17.8	23.0	26.0	17.5	100.0	35.6
Grand Total	8.2	9.5	15.7	25.4	26.0	15.2	100.0	34.6

Table: Average household size in urban areas by ward

Ward	Sample Size	Total Population Of Sample	Average Household Size
1	76	198	2.6
2	134	592	4.4
3	176	658	3.7
4	235	1061	4.5
5	43	176	4.1
6	91	274	3.0
7	412	1502	3.6
Grand Total	1167	4461	3.8

Table: Home language spoken in urban areas by ward

Ward	Afrikaans	English	isiXhosa	Other	Total Percentage
1	98.5	1.5	0.0	0.0	100.0
2	100.0	0.0	0.0	0.0	100.0
3	98.5	1.5	0.0	0.0	100.0
4	99.8	0.0	0.2	0.0	100.0
5	100.0	0.0	0.0	0.0	100.0
6	97.4	2.6	0.0	0.0	100.0
7	90.9	3.4	5.5	0.1	100.0

WARD PLAN: WARD 6 – FOURTH GENERATION IDP 2017 - 2022

Average Percentage	96.5	1.6	1.9	0.0	100.0
---------------------------	-------------	------------	------------	------------	--------------

Table: Percentage of population in urban areas by duration of residency by ward

Ward	0 - 5 years	6 - 10	11 - 20	> 20 years	Total	Average Duration
1	17.7	15.7	35.9	30.8	100.0	19.3
2	11.7	10.1	37.0	41.2	100.0	23.1
3	20.5	11.7	24.3	43.5	100.0	22.4
4	16.0	17.7	31.4	34.9	100.0	20.4
5	2.3	5.1	64.8	27.8	100.0	21.3
6	26.6	28.8	26.3	18.2	100.0	14.1
7	22.5	16.5	34.1	26.9	100.0	17.7
Grand Total	18.5	15.5	33.2	32.8	100.0	19.7

Table: Percentage of households in urban areas by origin of previous residency by ward

Ward	No Move (Last 5 years)	Elsewhere in this town	Another town in Bergrivier Municipality	On a farm in Bergrivier Municipality	Elsewhere in South Africa	Another country	Total Percentage
1	86.8	6.6	2.6	1.3	2.6	0.0	100.0
2	88.8	7.5	0.0	1.5	2.2	0.0	100.0
3	83.5	6.8	2.8	1.1	4.5	1.1	100.0
4	82.6	9.4	3.8	0.4	3.4	0.4	100.0
5	97.7	2.3	0.0	0.0	0.0	0.0	100.0
6	70.3	7.7	4.4	0.0	15.4	2.2	100.0
7	74.3	11.2	1.2	1.2	12.1	0.0	100.0
Average Percentage	80.4	8.8	2.1	0.9	7.3	0.4	100.0

Table: Percentage distribution of people per dwelling type by ward

Ward	Single house	Town house / semi-detached house / apartment	Informal shack	Other	Total Percentage	Percentage of Backyard Dwellers
1	100.0	0.0	0.0	0.0	100.0	1.5
2	93.4	6.6	0.0	0.0	100.0	13.2

WARD PLAN: WARD 6 – FOURTH GENERATION IDP 2017 - 2022

Ward	Single house	Town house / semi-detached house / apartment	Informal shack	Other	Total Percentage	Percentage of Backyard Dwellers
3	99.8	0.2	0.0	0.0	100.0	1.7
4	90.2	9.8	0.0	0.0	100.0	13.0
5	100.0	0.0	0.0	0.0	100.0	17.0
6	98.9	1.1	0.0	0.0	100.0	5.1
7	96.1	3.1	0.7	0.1	100.0	11.0
Average Percentage	95.4	4.3	0.2	0.0	100.0	9.8

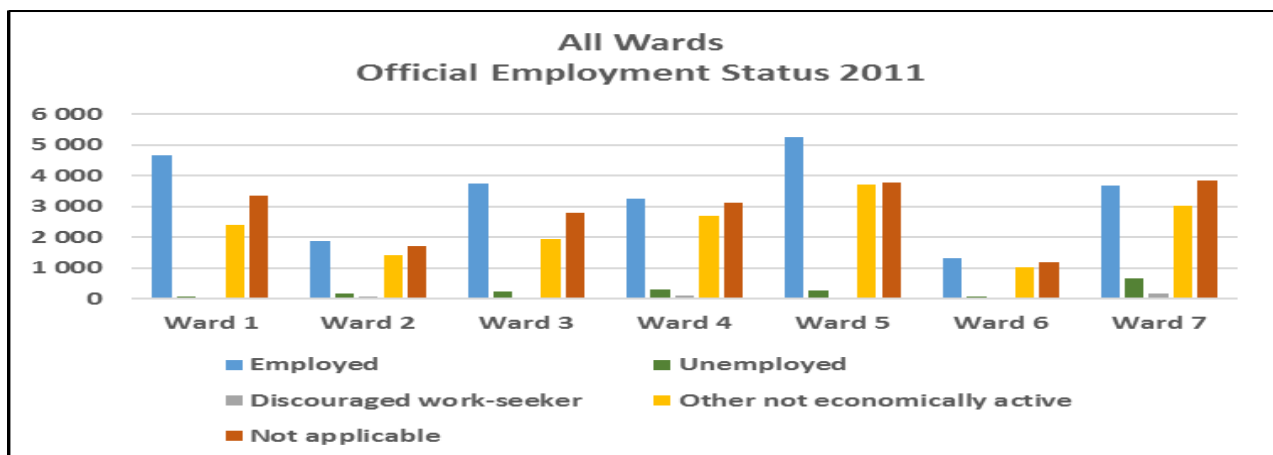
Table: Percentage distribution of households per ownership type by ward

Ward	Owner	Renter	Staying Free	Other	Total Percentage
1	96.5	3.5	0.0	0.0	100.0
2	86.3	5.9	3.2	4.6	100.0
3	84.3	9.0	2.0	4.7	100.0
4	90.2	4.5	3.5	1.8	100.0
5	79.5	11.4	9.1	0.0	100.0
6	90.9	8.4	0.0	0.7	100.0
7	84.9	10.1	4.6	0.4	100.0
Average Percentage	88.7	7.3	2.2	1.8	100.0

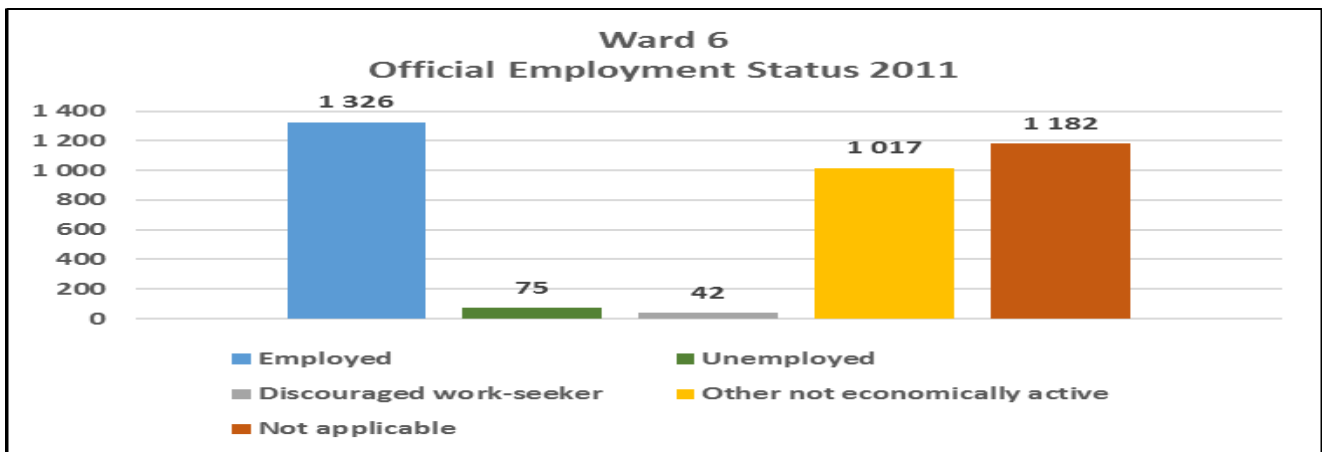
Employment

Employment status

Source: StatsSA2011



Based on above employment status table. Source: StatsSA2011)



Statistics South Africa
Education_Electoral_Wards
Table 1
Geography by Official employment status
for Person weighted

	Employed	Unemployed	Discouraged work-seeker	Other not economically active	Not applicable	TOTAL	employed %	unemployed broad %	unemployed narrow %	Other not economically active	Not applicable
Western Cape	2 010 699	552 732	122 754	1 330 518	1 806 033	5 822 736	34.5%	11.6%	9.5%	22.9%	31.0%
DC1: West Coast	141 117	24 204	5 526	97 632	123 288	391 767	36.0%	7.6%	6.2%	24.9%	31.5%
WC011: Matzikama	23 808	3 888	1 302	15 951	22 200	67 149	35.5%	7.7%	5.8%	23.8%	33.1%
WC012: Cederberg	18 540	2 187	657	12 477	15 909	49 770	37.3%	5.7%	4.4%	25.1%	32.0%
WC013: Bergrivier	23 760	1 731	462	16 185	19 758	61 896	38.4%	3.5%	2.8%	26.1%	31.9%
Ward 1	4 659	54	33	2 406	3 351	10 503	44.4%	0.8%	0.5%	22.9%	31.9%
Ward 2	1 863	153	54	1 419	1 719	5 208	35.8%	4.0%	2.9%	27.2%	33.0%
Ward 3	3 747	228	21	1 938	2 796	8 730	42.9%	2.9%	2.6%	22.2%	32.0%
Ward 4	3 234	309	111	2 688	3 117	9 459	34.2%	4.4%	3.3%	28.4%	33.0%
Ward 5	5 265	258	30	3 699	3 762	13 014	40.5%	2.2%	2.0%	28.4%	28.9%
Ward 6	1 326	75	42	1 017	1 182	3 642	36.4%	3.2%	2.1%	27.9%	32.5%
Ward 7	3 666	654	165	3 012	3 834	11 331	32.4%	7.2%	5.8%	26.6%	33.8%

All cells in this table have been randomly rounded to base 3

Created on 18 May 2017
Statistics South Africa: Web page: www.statssa.gov.za
Support: info@statssa.gov.za
Copyright © 2010 Statistics South Africa. All rights reserved.

7.6.3.3 Social Profile

There is currently limited information available on the indicators to determine the social-economic profile of a ward. Chapter 4 contains significant information on the social profile of Bergrivier municipal area. Information that could be obtained, include recent statistics from the local school and from the clinics:

Education and Skills

There is currently limited information available on the indicators to determine the social-economic profile of a ward. Chapter 4 contains significant information on the social profile of Bergrivier municipal area. Information that could be obtained, include recent statistics from the local school and from the clinics:

Primary School Aurora

Indicator	2014	2015	2016	2017
Number of learners	183	183	196	221
Average learner/teacher ratio	1/23	1/23	1/25	1/28
Average "dropout" rate	2%	3%	3%	0%
Drop % in FET phase	0	0	0	0

WARD PLAN: WARD 6 – FOURTH GENERATION IDP 2017 - 2022

Number of primary schools	1	1	1	1
Number of secondary schools	0	0	0	0
Number of “no fee” schools	1	1	1	1
Pass rate for Senior Certificate	n/a	n/a	n/a	n/a

Noordhoek Primary School

Indicator	2014	2015	2016	2017
Number of learners	912	837	927	997
Average learner/teacher ratio	1- 40	1- 40	1- 40	1- 40
Average “dropout” rate	31	24	14	4
Drop % in FET phase	n/a	n/a	n/a	n/a
Number of primary schools	2	2	2	2
Number of secondary schools	1	1	1	1
Number of “no fee” schools	1	1	1	1
Pass rate for Senior Certificate	n/a	n/a	n/a	n/a

Health

Aurora clinic	2014	2015	2016	Total clients	Total tested for HIV	Total HVI positive
Headcount 5 years and older	1 231	1 322	1 266	4 422		
Headcount under 5 years	173	227	203			
Total clients accepted HCT (incl antenatal)	157	153	171		481	
Total clients tested HIV pos (incl antenatal)	2	1	5			8
Diabetes patients put on treatment 18 years and older - new	1	4	0			
Diabetes patients put on treatment under 18 years - new	0	0	0			
Hypertension case put on treatment under 18 years - new	0	0	1			
Hypertension case put on treatment 18 years and older - new	3	20	0			
Velddrif clinic	2014	2015	2016	Total clients	Total tested for HIV	Total HVI positive
Headcount 5 years and older	18 765	19 022	17 546	64 591		
Headcount under 5 years	3 308	3 430	2 520			
Total clients accepted HCT (incl antenatal)	2 106	2694	2 531		7 331	
Total clients tested HIV pos (incl antenatal)	36	48	49		133	133
Diabetes patients put on treatment 18 years and older - new	2	5	12			
Diabetes patients put on treatment under 18 years - new	0	1	0			
Hypertension case put on treatment under 18 years - new	0	1	0			
Hypertension case put on treatment 18 years and older - new	21	22	27			

7.6.3.4 Access to Municipal Services

It is important to acknowledge the distinction between bulk and reticulation infrastructure as to understand the priorities engineers at the municipality place on development. The needs of the community reflect predominantly on infrastructure such as streets, pavements, street lighting, water and sanitation on a household and street level. Whereas it is the priority of the municipality to deliver and maintain these services, the focus is also to ensure sustainable bulk infrastructure. This requires specialist knowledge and a study was done in 2016/17 by the municipality on the status of infrastructure. The following is a snapshot of the status of infrastructure in Bergrivier municipal area and the status of towns in Ward 6 can clearly be seen:

The legend of the snapshot is as follows:

- Red - Upgrading needed before 2020
- Yellow - Upgrading needed between 2020 and 2025
- Green - Upgrading needed between 2025 and 2035

Town	Water Source	WTW	WWTW	Electricity	Storage
<u>Piketberg</u>					
Porterville					
<u>Velddrif</u>					
<u>Eendekuil</u>					
<u>Redelinghuys</u>			Septic Tanks		
Aurora			Septic Tanks		
<u>Dwarskersbos</u>					

The following is a brief discussion on the services delivered and service levels in Dwarskersbos and Aurora collectively. As Noordhoek is part of the statistics of Velddrif, but is part of Ward 6, the statistics for Noordhoek cannot be included in these statistics: (Note: the figure for the rural areas will be incorporated once the information has been obtained and verified)

- **Access to Piped Water**

WARD PLAN: WARD 6 – FOURTH GENERATION IDP 2017 - 2022

Piped (tap) water inside dwelling/institution	Piped (tap) water inside yard	Piped (tap) water on community stand: distance less than 200m from dwelling/institution	Piped (tap) water on community stand: distance between 200m and 500m from dwelling/institution	Piped (tap) water on community stand: distance between 500m and 1000m (1km) from dwelling /institution	Piped (tap) water on community stand: distance greater than 1000m (1km) from dwelling/institution	No access to piped (tap) water
405	6	-	-	-	-	-

Source: StatsSA2011

- Energy or fuel for cooking**

Electricity	Gas	Paraffin	Wood	Coal	Animal dung	Solar	Other	None	Unspecified	Not applicable
509	6	-	4	-	-	-	-	-	-	-

Source: StatsSA2011

- Energy or fuel for lighting**

Electricity	Gas	Paraffin	Candles (not a valid option)	Solar	None	Unspecified
406	-	-	3	1	-	-

Source: StatsSA2011

- Refuse removal**

Removed by local authority/private company at least once a week	Removed by local authority/private company less often	Communal refuse dump	Own refuse dump	No rubbish disposal	Other
393	-	-	13	1	3

Source: StatsSA2011

- Source of Water**

Regional/local water scheme (operated by municipality or water services provider)	Borehole	Spring	Rain water tank	Dam/pool/stagnant water	River/stream	Water vendor	Water tanker	Other
396	5	6	2	-	-	1	-	-

Source: StatsSA2011

- Toilet facilities**

WARD PLAN: WARD 6 – FOURTH GENERATION IDP 2017 - 2022

None	Flush toilet (connected to sewerage system)	Flush toilet (with septic tank)	Chemical toilet	Pit toilet with ventilation (VIP)	Pit toilet without ventilation	Bucket toilet	Other
3	231	174	2	1	-	-	-

Source: StatsSA2011

7.6.4 INFRASTRUCTURE DEVELOPED AND/OR MUNICIPAL SERVICES DELIVERED IN WARD 6

7.6.4.1 Access to Basic Services

The following services are being delivered to indigent households on a sustainable level in Ward 6

Water			Sanitation	
Urban	RDP	Informal	Septic tanks	Flush toilets
1 Basic + 6kl Water			1	1 Heffing
Electricity			Refuse Removal	
Limited to 20 Amp=50 Units >20 Amp=0			1 x /week	

7.6.4.2 Capital spend on bulk infrastructure

Dept Description	PROJECT_OWN_DESCRIPTION	WYK	Requested BUD1819	Requested Funding 2018/19	Requested BUD1920	Requested Funding 2019/20	Requested BUD2021	Requested Funding 2020/21
Solid Waste Removal	Refuse collection point (RH/DKB/EK)	5,6		el		el	1 900 000	el
Solid Waste Removal	Weighbridge (VD,PV)	1,2,6,7				el		
Solid Waste Removal	Fence at Transfer Station	6,7	250 000	cr	250 000	cr	250 000	cr
Sewerage	Replace rising mains in pump stations	6,7	150 000	cr	200 000	cr	200 000	cr
Sewerage	Fencing Sewer Pump Stations	6,7	60 000	cr	100 000	cr	250 000	cr
Sewerage	New Vacuum Tanker Truck	6,7					1 000 000	el
Sewerage	Switchgear and pumps	6,7	120 000	cr	200 000	cr	200 000	cr
Sewerage	Telemetry at pump stations	6,7	150 000	cr	150 000	cr	150 000	cr

WARD PLAN: WARD 6 – FOURTH GENERATION IDP 2017 - 2022

Dept Description	PROJECT_OWN_DESCRIPTION	WYK	Requested BUD1819	Requested Funding 2018/19	Requested BUD1920	Requested Funding 2019/20	Requested BUD2021	Requested Funding 2020/21
Sewerage	Sewerage stand by pumps	6,7	180 000	cr	40 000	cr	250 000	cr
Sewerage	VD Pumpline	6		mig	2 554 064	mig		mig
Waste Water Treatment	Security at WWTW	6,7	50 000	cr	50 000	cr		
Waste Water Treatment	Roof at Inlet Works (Green Drop requirements)	6,7	30 000	cr			300 000	cr
Waste Water Treatment	Basket screens for pumpstations	6,7		cr		cr		
Sports Grounds and Stadiums	Borehole for irrigation	6		cr	300 000	cr		
Holiday Resorts	Sound System for Beach Resorts	6,7		cr	15 000	cr	30 000	cr
Holiday Resorts	Paving at ablution facilities at Beach Resorts	6,7	10 000	cr				
Holiday Resorts	Recreational Equipment (Games)	6,7		cr	50 000	cr	50 000	cr
Holiday Resorts	Furniture & Equipment - Holiday Resorts	6,7	100 000	cr	300 000	cr	250 000	cr
Holiday Resorts	Replace Cupboards of chalets at Beach Resorts	6,7	50 000	cr	50 000	cr		
Holiday Resorts	Upgrading of ablution blocks at resorts	6,7	270 000	cr	150 000	cr	200 000	cr
Holiday Resorts	Full Height Double Turnstile	6		cr	120 000	cr	150 000	cr
Water Treatment	Purchase new borehole pumps	6	50 000	cr	50 000	cr		
Water Treatment	Refurbish boreholes (Rooigat)	6		cr	150 000	cr		
Roads	Chemical sprayer mounted on LDV	6,7		cr	100 000	cr	100 000	cr
Roads	Construction of roads: RDP Houses	4-6	350 000	el	300 000	el	300 000	el

Dept Description	PROJECT_OWN_DESCRIPTION	WYK	Requested BUD1819	Requested Funding 2018/19	Requested BUD1920	Requested Funding 2019/20	Requested BUD2021	Requested Funding 2020/21
Roads	Pave sidewalks (PV - 150 & VD - 200)	1,2,6,7	350 000	cr	400 000	cr	450 000	cr
Roads	Reseal/Construction of streets	6	600 000	el				
Electricity	Mid block lines	6,7		cr	340 000	cr	400 000	cr
Electricity	Low Cost Housing (Laaipleke Sandlelie - Rollover)	6				doe		
Electricity	Larger HT Switches - standby battery cell	6,7	70 000	cr				

7.6.4.3 Housing applicants

Although the municipality is only an implementation agent for housing, it is important to highlight the backlog in housing in Ward 6:

Town	Applicants 2011/12	Applicants 2012/13	Applicants 2013/14	Applicants 2014/15	Applicants 2015/16	Applicants 2016/17
Velddrif (including Noordhoek, Laaipleke, Port Owen)	900	827	1087	1178	1149	
Aurora	100	293	183	192	171	

Priority	Project	Town	Start	End	Capacity Until
9	IRDP	AU	Des 27	Des 28	20

7.6.4.4 Libraries

Library books issued per annum

LIBRARY	2011/12	2012/13	2013/14	2014/15	2015/16	2016/17
Aurora	7 795	7 464	7 466	7 272	7 064	
Noordhoek	24 201	20 764	18 523	17 749	20 689	
Dwarskersbos	0	0	693	4 247	5 800	

7.6.4.5 Sport Development

The following sport facilities exist in Ward 6:

Rugby, Soccer, Athletics, Tennis, Netball, Bowls, Golf, Swimming, Bowls, Racing pigeons, Angling, Jukskei.

7.6.4.6 Law enforcement

The municipality is responsible for law enforcement and the following is a summary of law enforcement in Ward 6:

- Patrols in all towns have been increased and regular road blocks and joint operations are being held with the SAPS;
- The enforcement of speed in all the areas;
- The education and mentoring of Pre - School children to prepare themselves to be responsible road users in the future;
- The successful addressing and illumination of illegal squatters on Municipal open spaces;
- The signing of a contract between the SPCA and the Municipality to enhance better service delivery to address the animal needs and welfare. Regular Animal clinics are being held;
- The renewing of a contract between the SPCA and the Municipality to enhance better service delivery to address the animal needs and welfare;
- The education and mentoring of Primary and Pre-school kids to prepare themselves to be responsible road users in the future. The “Daantjie Kat” training program was presented at various schools; and
- The sustained upgrading and refreshing of the road signage and markings in all the different areas of Bergrivier Municipality.

7.6.5 TOWN PLANNING

The management of planning and development within the Municipality takes place in accordance with National and Provincial legislation, combined with the Municipality’s applicable by-laws and policies. The Municipality’s by-laws and policies are aligned with National and Provincial directives and aim to facilitate sustainable urban and rural development within the jurisdiction area of the Municipality. Planning also includes all aspects pertaining to the management of municipal immovable property (land).

7.6.5.1 Spatial Planning

The Spatial Development Framework (SDF) indicates which type of development should be allowed in the Municipality, where it should take place, and how such development should be undertaken to ensure the best possible outcomes for the Community. It is a spatial manifestation of the IDP and in terms of the legislative requirements the SDF must form an integral part of the IDP (MSA, 2000). There must therefore be alignment between the IDP and the SDF. The Municipal Council approved a new SDF on 26 February 2013 and the underlying principles throughout the SDF include the principles of spatial justice, spatial sustainability and

efficiency and spatial resilience. The Bergrivier SDF strives to contribute to meet the following municipal objectives in all the Wards:

- Elimination of service and housing backlogs;
- Decrease in poverty;
- Elimination of social exclusion;
- Integration of human settlements;
- Stimulation of economic growth; and
- Development of skills levels.

The SDF is to be reviewed in 2018/2019.

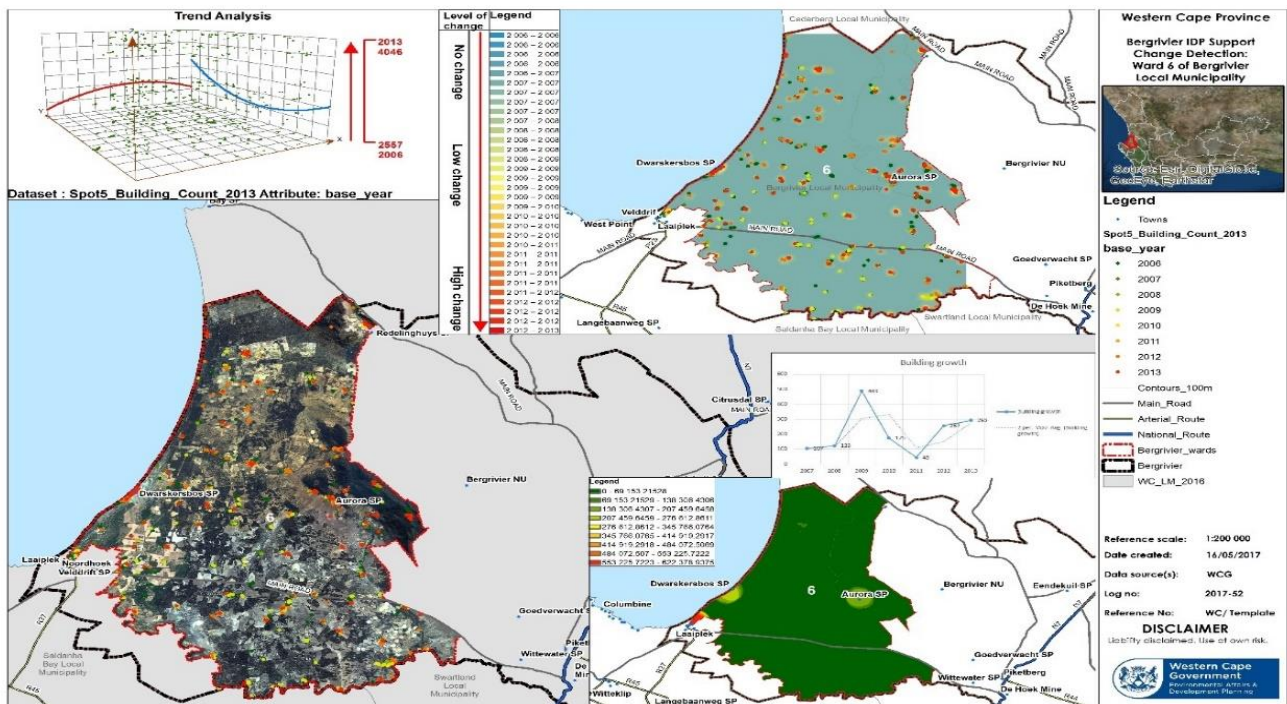
7.6.5.2 Land Use Management

The following indicates the various planning applications which were finalised from 2012 - 16 for ward 5:

TYPE OF APPLICATION	TOWN	SUBDIVISIONS	REZONINGS	CONSENT USES	DEPARTURES	REMOVAL OF RESTRICTIONS
Planning applications received	Aurora	1	-	-	3	-
	Velldrif	6	2	3	4	5
	Dwarskersbos	1	2	3	3	2
Applications finalised/resolved	Aurora	1	-	-	2	-
	Velldrif	14	3	7	5	7
	Dwarskersbos	3	4	3	4	4
Applications outstanding	Aurora	1	0	0	1	0
	Velldrif	12	0	0	3	6
	Dwarskersbos	3	1	5	5	3

It is important (and legislatively required) to keep record of the various planning decisions made by the competent authority. By spatially depicting these decisions, a visual representation can over time be constructed, which could assist to identify trends, needs and gaps and to direct future decisions on development planning issues.

7.6.5.2 Change Detection



During 2016, the Department of Environmental Affairs and Development Planning embarked on a project to investigate change detection for building growth trends and hot spot analysis for Western Cape municipalities: “Detecting Building Hotspots”. With rapid changes in developments occurring over huge areas within the Western Cape Province, whereby many developments taking place unnoticed and unplanned shows an alarming signal that government planned infrastructure will soon be outrun, and this threatens government service delivery. Change detection is the assessment of the same area or object over specific different periods of time by means of quantitative analysis based on geo-metric registrations, radiometric normalisation, calibration, classification of change detection schemes, change detection methods and ground truth data (Mas, 1999).

Change detection was conducted through the use of the following methodologies: Data applied in these methodologies was the Eskom Spot 5 satellite building count data, and various geo-statistical analysis techniques were used as a spatial modelling tool to interpolate surface areas using SBC, and in terms of modelling building density point pattern spatial analysis was also carried out using the same data. Trend analysis was included in this project, because it’s also a very important technique to show the rate at which building growth patterns are increasing or diminishing, and in which area this is happening. The technical report for the project, dated March 2016, is available for more detailed investigation.

In Ward 6, the above map and illustrative graphs show that the denser development in the Ward can be found around Aurora and Dwarskersbos, as well as the part of Velddrif (Noordhoek) included into the Ward. This trend in density is to be expected, as it can be assumed by observation. The “hot spots” (the level of change) in Ward 6 indicate most recent building activity (red spots) distributed over the whole Ward, but with some

concentration around Aurora and Redelinghuys, and the banks of the Berg River. Change detection within a Ward should always be viewed in context with the rest of the Municipal area and cross municipal boundaries. The study cannot predict the reason for these hot spots, but merely shows trends that decision makers should be aware of, its significance for service delivery. In the review of the Spatial Development Framework, closer investigation of these trends can direct the recommendations for the longer term.

7.6.5.3 Development Priorities

Development priorities include:

- The Precinct Plan for Velddrif, including Noordhoek (Ward 6) and the application for funding.

7.6.6 LOCAL ECONOMIC DEVELOPMENT

Although the Local Economic Development Strategy is for Bergrivier as a whole, some projects will impact on Ward 6. Some of these projects include:

- * Enhancing local mobility
- * Informal trading - The municipality provides retail trading spaces at R 100 per month amount. Lease agreements run for a period of 12 months. The purpose of these facilities is to provide traders in the informal economic sector with the opportunity to trade in the central business zones.
- * LED Training - Through the West Coast Business Development Centre, a SMME Forum was established in Piketberg and the WCBDC is also responsible for a continuous programme of small business training in all of the other towns in Bergrivier.

According to a Business Climate Survey (2014) of the West Coast District, more than 60% of businesses were within the retail, wholesale trade, catering and accommodation sectors (MERO 2016 p38). The Small Enterprise Development Agency (SEDA) has also been offering assistance within the West Coast through providing business development support for SMMEs. (MERO 2016, p38). Agri-parks are currently being developed within the West Coast District which will result in opportunities for vegetable and crayfish farmers (MERO 2016, p38).

There are also tourism opportunities within the West Coast in terms of small business offering cycling tours, opening up backpackers as well as transporting tourists to local communities to experience local life. (MERO 2016, p38). Government can assist in the development of SMMEs in the District through creating incentives for foreign store owners to form partnerships with local store owners. This will assist in decreasing the tension between locals and foreigners as well as prevent local store owners from having to shut down their businesses. (MERO 2016, p38).

Improved transportation connectivity between West Coast areas and the Saldanha Bay IDZ would provide opportunity for SMME growth in the District. The SMMEs, which are predominantly locally owned, fall into the following business types, namely engineering, construction, earth moving plant and tippers, transport and logistics, accommodation, catering, security, manufacturing and information technology. Challenges identified

for the West Coast District were the lack of funding, lack of capacity, as well as the lack of training. Despite these challenges, the West Coast Development Business Centre (WCBDC) identified that the number of developments in the West Coast District can bring about numerous opportunities for the SMMEs. Bergrivier Municipality has an agreement with the WCBD to assist in the development of SMMEs as they are there to develop and enhance SMMEs through the delivery of quality and cost competitive service (West Coast Development Business Centre, 2016).

7.6.7 BERGRIVIER TOURISM

Bergrivier Tourism Organisation (BTO) - The Bergrivier Tourism Organisation (BTO) manages the tourism function on behalf of the municipality. BTO has offices in Piketberg, Velddrif, Porterville and Goedverwacht. The Municipality provides the BTO with a grant to cover for some of their operational costs during the financial years. The following activities and projects take place in ward 1 and still do on a yearly base:

- Tourism Blue Print was contracted to design a website for Bergrivier Tourism and the URL www.travelbergrivier.co.za was registered as the official website address of the new site;
- BTO attend consumer shows such as the Outdoor Show, CTT Joint Marketing, Cape Town Getaway and the Namibian Tourism Expo. Most of these shows involve direct engagement with the public. With the exception of the Namibian Tourism Expo, BTO can attend these consumer shows at very low costs as most of the expenses are carried by the RTO; and
- The annual Bergrivier Canoe Marathon.

7.6.8 CLIMATE CHANGE AND BIODIVERSITY

The Municipality has a **Climate Change Adaption Plan** which is based on each ward in the Bergrivier area. The Municipality also highlights issues such as continued conservation of coastal, estuary and biodiversity, sustainable water management, developing the alternative energy plan, establish a PPC biomass-to-energy initiative in Piketberg and provide resilient and low carbon low income housing. The Municipality considers the management and promotion of protected areas and critical biodiversity as a socio-economic development priority. Plans and actions which has been taken includes:

- a) Participation in the Local Action for Biodiversity Programme
- b) Use of CBAs in spatial development planning
- c) Conservation of the Berg River Estuary
- d) Adopt a street tree campaign
- e) Coastal cleaning
- f) Cleaning of the Porterville stream
- g) Clearing of alien vegetation
- h) The development and implementation of an Estuary and Integrated Coastal Management Plan

- i) Biodiversity and training for Councillors, official and ward committee members and the municipal residents
- j) Plans of incorporating green energy, solar geysers and energy efficiency measures in low cost housing

Other biodiversity programmes include:

- Recycling in all towns and introduction composting
- Ongoing efforts of addressing the rehabilitation of waste disposal sites
- Plans of awareness campaigns among farmers and in public schools to increase awareness of the importance of waste minimization and recycling

7.6.9 CLIENT SATISFACTION

A survey was conducted in 2016/17 on client satisfaction per ward and each ward was divided into sections to ensure with a 10% sampling per section. This ensures that the ward has been surveyed in totality and not limited to specific areas in/of a ward. A sample of 10% is regarded as a fair reflection of the sentiments in a community as a whole.

The following is a summary of the survey for Ward 6:

- Aurora

Roads and streets							
Answer Options	Poor	Below average	Average	Above average	Excellent	Don't know	Response Count
Percentage	72,22%	5,56%	16,67%	5,56%	0%	0%	
Answer Options	Response Percent					Response Count	
Tarring of roads	82,4%					14	
Resurface roads (Improve quality of road surface)	17,6%					3	
Fixing of potholes	11,8%					2	
Sweeping of streets	0,0%					0	
Provide street names, traffic signs and markers	11,8%					2	
Build speed bumps	23,5%					4	
Other (please specify)	29,4%					5	

Street lights							
Answer Options	Poor	Below average	Average	Above average	Excellent	Don't know	Response Count
Percentage	0%	0%	11,11%	88,89%	0%	0%	
Answer Options	Response Percent					Response Count	
Installing street lights (none in street)	0,0%					0	
Provide additional street lights	0,0%					0	
Replace lights - faulty	100,0%					1	
Replace lights - too dim	0,0%					0	
Other (please specify)	0,0%					0	

Sidewalks							
Answer Options	Poor	Below average	Average	Above average	Excellent	Don't know	Response Count
Percentage	72,22%	0%	11,11%	5,56%	0%	11,11%	
Answer Options	Response Percent					Response Count	
Build additional sidewalks	73,3%					11	
Resurface existing sidewalks	13,3%					2	
Widen sidewalks	0,0%					0	
Keep sidewalks clean (Remove refuse)	0,0%					0	
Keep sidewalks clean (Remove weeds)	0,0%					0	
Other (please specify)	26,7%					4	

Storm water							
Answer Options	Poor	Below average	Average	Above average	Excellent	Don't know	Response Count
Percentage	55,56%	0%	5,56%	22,22%	0%	16,67%	
Answer Options	Response Percent					Response Count	
Provide storm water channel curbs	75,0%					9	
Keep storm water channel curbs and drains clean	0,0%					0	
Capacity of existing storm water channel curbs to be enlarged	8,3%					1	
Other (please specify)	16,7%					2	

Provision of electricity							
Answer Options	Poor	Below average	Average	Above average	Excellent	Don't know	Response Count
Percentage	16,67%	0%	11,11%	61,11%	11,11%	0%	
Answer Options	Response Percent					Response Count	
Replace faulty/ old reticulation infrastructure incl. meters	25,0%					1	
Speed-up provision of electrical connections	0,0%					0	
Provide additional reticulation infrastructure	0,0%					0	
Enlarge capacity (to prevent outages)	0,0%					0	
Reduce price of electricity	50,0%					2	
Restoration of connections after outages	0,0%					0	
Other (please specify)	50,0%					2	

Provision of water							
Answer Options	Poor	Below average	Average	Above average	Excellent	Don't know	Response Count
Percentage	22,22%	11,11%	5,56%	55,56%	5,56%	0%	
Answer Options	Response Percent					Response Count	
Provide additional infrastructure	0,0%					0	
Enlarge capacity (reservoirs or sources)	0,0%					0	
Maintain infrastructure (Fix leaks and faulty meters)	0,0%					0	
Speed-up provision of connections	0,0%					0	
Improve water quality	57,1%					4	

WARD PLAN: WARD 6 – FOURTH GENERATION IDP 2017 - 2022

Reduce price of water	14,3%	1
Improve access to water / far from nearest tap	0,0%	0
Fix low water pressure	0,0%	0
Restoration after pipe bursts	28,6%	2
Other (please specify)	14,3%	1

Provision of sanitation							
Answer Options	Poor	Below average	Average	Above average	Excellent	Don't know	Response Count
Percentage	11,11%	0%	5,56%	72,22%	11,11%	0%	
Answer Options	Response Percent					Response Count	
Provide flush toilets & necessary infrastructure	50,0%					2	
Speed-up provision of connections	25,0%					1	
Enlarge sewer plant capacity	0,0%					0	
Maintain infrastructure (Fix blockages)	0,0%					0	
Attend to bad odours	0,0%					0	
Speedy clearance of blockages	0,0%					0	
Reduce price for sewerage services	0,0%					0	
Other (please specify)	25,0%					1	

Refuse removal							
Answer Options	Poor	Below average	Average	Above average	Excellent	Don't know	Response Count
Percentage	5,56%	0%	0%	72,22%	22,22%	0%	
Answer Options	Response Percent					Response Count	
Removing waste	0,0%					0	
Cleaning and upkeep of street waste bins	0,0%					0	
Provide more waste bins	0,0%					0	
Combat illegal dumping	0,0%					0	
Implement re-cycling	0,0%					0	
Removal of garden waste	0,0%					0	
Other (please specify)	100,0%					2	

Recreational facilities and play parks							
Answer Options	Poor	Below average	Average	Above average	Excellent	Don't know	Response Count
Percentage	33,3 3%	5,56%	16,67%	27,78%	0%	16,67%	
Answer Options	Response Percent					Response Count	
Provide additional sport fields	0,0%					0	
Upgrade existing sport facilities	22,2%					2	
Provide shade at sport fields (plant trees)	11,1%					1	
Relocate sport fields/ recreational facilities	0,0%					0	
Clean and maintain sport fields	0,0%					0	
Provide and maintain recreational equipment for children	44,4%					4	
Make play parks safe for children	22,2%					2	
Clean and maintain play parks	11,1%					1	
Maintenance of municipal swimming pool	0,0%					0	

WARD PLAN: WARD 6 – FOURTH GENERATION IDP 2017 - 2022

Cleanliness of municipal swimming pool	0,0%	0
Other (please specify)	55,6%	5

Resorts: Caravan parks / Camping sites

Answer Options	Poor	Below average	Average	Above average	Excellent	Don't know	Response Count
Percentage	0%	0%	0%	0%	0%	100%	
Answer Options	Response Percent					Response Count	
Keep terrain and buildings clean and tidy	0,0%					0	
Maintain ablution facilities	0,0%					0	
Provide security	0,0%					0	
Provide shade and landscape facility	0,0%					0	
Other (please specify)	100,0%					1	

Beautification (Open spaces/ Cemeteries / Streets)

Answer Options	Poor	Below average	Average	Above average	Excellent	Don't know	Response Count
Percentage	27,78%	0%	5,56%	61,11%	0%	5,56%	
Answer Options	Response Percent					Response Count	
Clean and maintain Open Spaces	33,3%					2	
Clean and maintain cemeteries	83,3%					5	
Provide and maintain garden furniture (benches & bins)	0,0%					0	
Plant trees and shrubs (landscape) cemeteries	0,0%					0	
Plant trees and shrubs (landscape) along streets	0,0%					0	
Clean and Maintain municipal buildings and infrastructure	33,3%					2	
Other (please specify)	16,7%					1	

Libraries, Museums and Municipal buildings

Answer Options	Poor	Below average	Average	Above average	Excellent	Don't know	Response Count
Percentage	22,22%	0%	5,56%	55,56%	16,67%	0%	
Answer Options	Response Percent					Response Count	
Provide community hall	0,0%					0	
Improve library service	40,0%					2	
Clean and maintain library	0,0%					0	
Improve access to libraries	0,0%					0	
Improve museum service	0,0%					0	
Clean and maintain and develop museum	0,0%					0	
Improve access to museums	0,0%					0	
Appropriate use of municipal buildings and grounds	20,0%					1	
Clean and maintain municipal buildings	40,0%					2	
Other (please specify)	60,0%					3	

Traffic services

Answer Options	Poor	Below average	Average	Above average	Excellent	Don't know	Response Count
Percentage	22,22%	0%	22,22%	44,44%	0%	11,11%	

WARD PLAN: WARD 6 – FOURTH GENERATION IDP 2017 - 2022

Answer Options	Response Percent	Response Count
Improve vehicle registrations and licencing	0,0%	0
Improve efficiency of vehicle licence renewals	0,0%	0
More visible patrolling	87,5%	7
Control those who speed / drive recklessly	0,0%	0
More friendly service	0,0%	0
Improve road-side support	0,0%	0
Other (please specify)	25,0%	2

Emergency services							
Answer Options	Poor	Below average	Average	Above average	Excellent	Don't know	Response Count
Percentage	38,89%	11,11%	16,67%	27,78%	0%	5,56%	

Answer Options	Response Percent	Response Count
Improve availability	55,6%	5
Improve reaction times	100,0%	9
Improve training of emergency staff	0,0%	0
Improve support during emergencies	33,3%	3
Other (please specify)	22,2%	2

Building Plan Approval and Control							
Answer Options	Poor	Below average	Average	Above average	Excellent	Don't know	Response Count
Percentage	0%	0%	0%	11,11%	5,56%	83,33%	

Land Use Planning and Control							
Answer Options	Poor	Below average	Average	Above average	Excellent	Don't know	Response Count
Percentage	11,11%	5,56%	0%	0%	5,56%	77,78%	

Answer Options	Response Percent	Response Count
Improve land use (re-zoning and subdivision) applications process	0,0%	0
Improve clarity re land use application procedure and requirements	0,0%	0
Improve access to status of land use applications	0,0%	0
Improve procedure to issue zoning certificates	100,0%	1
Improve correctness of zoning certificates	0,0%	0
Improve awareness of spatial development framework provisions	0,0%	0
Improve awareness of town plans	0,0%	0
Improve the process of land transactions and letting	0,0%	0
Improve the process of property valuation	0,0%	0
Improve property tax administration	0,0%	0
Other (please specify)	0,0%	0

Administration and communication							
Answer Options	Poor	Below average	Average	Above average	Excellent	Don't know	Response Count
Percentage	38,89%	0%	5,56%	44,44%	11,11%	0%	

WARD PLAN: WARD 6 – FOURTH GENERATION IDP 2017 - 2022

Answer Options	Response Percent	Response Count
Improve response to general enquiries	14,3%	1
Improve communication with the public	42,9%	3
Improve financial administration	0,0%	0
Improve skills to solve account queries	14,3%	1
Improve internal communication	0,0%	0
Alleviate financial burden of unemployed debtors	0,0%	0
Ward councillor does not serve the community	42,9%	3
Improve the effectiveness of ward councillors	14,3%	1
Other (please specify)	57,1%	4

Municipal staff							
Answer Options	Poor	Below average	Average	Above average	Excellent	Don't know	Response Count
Percentage	5,56%	0%	0%	83,33%	11,11%	0%	
Answer Options	Response Percent						Response Count
Improve telephone etiquette	0,0%						0
Improve friendliness	0,0%						0
Improve helpfulness	100,0%						1
Improve skills	0,0%						0
Improve respectfulness	0,0%						0
Improve knowledge (related to municipality and its functions)	0,0%						0
Other (please specify)	0,0%						0

Indicate your preferred mode of communication		
Answer Options	Response Percent	Response Count
Staff member at Office	0,0%	0
Public meetings	22,2%	4
Community Development Workers	0,0%	0
Pamphlets and newsletters	44,4%	8
SMS	11,1%	2
Local Newspapers	5,6%	1
Municipal Accounts	16,7%	3
Municipal Website	0,0%	0
Social Media (Facebook, Twitter)	0,0%	0
Other (please specify)	0,0%	0

Housing							
Answer Options	Poor	Below average	Average	Above average	Excellent	Don't know	Response Count
Percentage	83,33%	0%	11,11%	0%	0%	5,56%	
Answer Options	Response Percent						Response Count
Provide more housing for low income families	88,2%						15
Support residents to fix badly built subsidized (before 1996) houses	0,0%						0
Provide more GAP housing	0,0%						0
Too few rooms	5,9%						1
Provide ablution facilities	0,0%						0

Other (please specify)	17,6%	3
------------------------	-------	---

SMME/Local Economic Development

Answer Options	Poor	Below average	Average	Above average	Excellent	Don't know	Response Count
Percentage	16,67%	0%	0%	5,56%	0%	77,78%	

Answer Options	Response Percent	Response Count
Provide land for emerging farmers	0,0%	0
Facilitate partnerships with commercial farmers	0,0%	0
Provide trading stalls	66,7%	2
Property tax rebates for small businesses	0,0%	0
Provide beehives for small manufacturing enterprises	0,0%	0
Provide technical support	0,0%	0
Provide infrastructure for fishermen (slipway)	0,0%	0
Assist fishermen with acquisition of equipment/boats	0,0%	0
Other (please specify)	33,3%	1

Unemployment

Answer Options	Poor	Below average	Average	Above average	Excellent	Don't know	Response Count
Percentage	61,11%	0%	22,22%	0%	0%	16,67%	

Answer Options	Response Percent	Response Count
Provide more jobs	100,0%	14
Provide/Support skills development programmes	14,3%	2
Provide/Support adult education	0,0%	0
Other (please specify)	35,7%	5

Education

Answer Options	Poor	Below average	Average	Above average	Excellent	Don't know	Response Count
Percentage	22,22%	5,56%	5,56%	44,44%	5,56%	16,67%	

Answer Options	Response Percent	Response Count
Improve access to education	50,0%	3
Support maintenance of educational facilities	0,0%	0
Provide financial assistance to educational institutions	16,7%	1
Provide after school care facilities	16,7%	1
Other (please specify)	16,7%	1

Health issues

Answer Options	Poor	Below average	Average	Above average	Excellent	Don't know	Response Count
Percentage	61,11%	11,11%	11,11%	11,11%	0%	5,56%	

Answer Options	Response Percent	Response Count
Provide buildings for clinics	46,7%	7
Employ more health care staff	66,7%	10

WARD PLAN: WARD 6 – FOURTH GENERATION IDP 2017 - 2022

Inspect fresh food outlets more regularly	0,0%	0
Apply health regulations	0,0%	0
Improve service at health facilities	46,7%	7
Vaccinate/sterilize stray animals	0,0%	0
Other (please specify)	46,7%	7

Crèche							
Answer Options	Poor	Below average	Average	Above average	Excellent	Don't know	Response Count
Percentage	22,22%	0%	5,56%	50%	0%	22,22%	
Answer Options	Response Percent					Response Count	
Provide buildings for local crèches	60,0%					3	
Provide training and enrichment programmes	60,0%					3	
Support local crèches with educational materials	20,0%					1	
Other (please specify)	0,0%					0	

Youth development							
Answer Options	Poor	Below average	Average	Above average	Excellent	Don't know	Response Count
Percentage	72,22%	0%	11,11%	5,56%	0%	11,11%	
Answer Options	Response Percent					Response Count	
Provide / Support youth development programmes	80,0%					12	
Provide employment	33,3%					5	
Provide social health programmes	26,7%					4	
Combat drug and substance abuse	13,3%					2	
Provide sport and recreation facilities	20,0%					3	
Employ a youth coordinator	0,0%					0	
Other (please specify)	13,3%					2	

Sport development							
Answer Options	Poor	Below average	Average	Above average	Excellent	Don't know	Response Count
Percentage	38,89%	11,11%	11,11%	22,22%	5,56%	11,11%	
Answer Options	Response Percent					Response Count	
Provide/support sport development programmes	100,0%					10	
Support local sport clubs	0,0%					0	
Encourage recreational sport	0,0%					0	
Other (please specify)	10,0%					1	

Tourism development							
Answer Options	Poor	Below average	Average	Above average	Excellent	Don't know	Response Count
Percentage	27,78%	5,56%	0%	5,56%	0%	61,11%	
Answer Options	Response Percent					Response Count	
Promote the tourism sector	80,0%					4	
Support local tourism organizations	20,0%					1	

WARD PLAN: WARD 6 – FOURTH GENERATION IDP 2017 - 2022

Assist initiatives to generate jobs in the hospitality sector	0,0%	0
Improve signage	0,0%	0
Enhance celebration of heritage (all aspects)	0,0%	0
Efficiency and helpfulness of Tourism Information Bureaus.	0,0%	0
Other (please specify)	20,0%	1

Which ONE of the following is the most important service that the Local Council must attend to in the next five years?

Answer Options	Response Percent	Response Count
Economic development / Job creation	38,9%	7
Housing for low income families (subsidized housing)	44,4%	8
Gap Housing (family earning between R4000 - R15000 per month)	0,0%	0
Roads and storm water	5,6%	1
Electricity	0,0%	0
Potable water	5,6%	1
Sewerage	5,6%	1
Refuse removal	0,0%	0

Which ONE of the following is the most important service that Provincial and National Government must attend to in the next five years?

Answer Options	Response Percent	Response Count
Education	11,1%	2
Crime / Safety and Security	5,6%	1
Economic Development / Job Creation	50,0%	9
Sports	5,6%	1
Health	16,7%	3
Support to Emerging Farmers	11,1%	2
Support access to fishing quotas	0,0%	0

- Dwarskersbos

Roads and streets

Answer Options	Poor	Below average	Average	Above average	Excellent	Don't know	Response Count
Percentage	12,82%	10,26%	15,38%	30,77%	30,77%	0%	

Answer Options	Response Percent	Response Count
Tarring of roads	0,0%	0
Resurface roads (Improve quality of road surface)	41,7%	5
Fixing of potholes	75,0%	9
Sweeping of streets	50,0%	6
Provide street names, traffic signs and markers	0,0%	0
Build speed bumps	0,0%	0
Other (please specify)	33,3%	4

Street lights

Answer Options	Poor	Below average	Average	Above average	Excellent	Don't know	Response Count
Percentage	10,26%	7,69%	2,56%	41,03%	35,90%	0%	

WARD PLAN: WARD 6 – FOURTH GENERATION IDP 2017 - 2022

Answer Options	Response Percent	Response Count
Installing street lights (none in street)	12,5%	1
Provide additional street lights	25,0%	2
Replace lights - faulty	62,5%	5
Replace lights - too dim	0,0%	0
Other (please specify)	37,5%	3

Sidewalks							
Answer Options	Poor	Below average	Average	Above average	Excellent	Don't know	Response Count
Percentage	12,82%	15,38%	10,26%	25,64%	25,64%	10,26%	
Answer Options	Response Percent					Response Count	
Build additional sidewalks	76,9%					10	
Resurface existing sidewalks	7,7%					1	
Widen sidewalks	7,7%					1	
Keep sidewalks clean (Remove refuse)	38,5%					5	
Keep sidewalks clean (Remove weeds)	23,1%					3	
Other (please specify)	7,7%					1	

Storm water							
Answer Options	Poor	Below average	Average	Above average	Excellent	Don't know	Response Count
Percentage	20,51%	7,69%	2,56%	17,95%	35,90%	15,38%	
Answer Options	Response Percent					Response Count	
Provide storm water channel curbs	90,0%					9	
Keep storm water channel curbs and drains clean	20,0%					2	
Capacity of existing storm water channel curbs to be enlarged	0,0%					0	
Other (please specify)	10,0%					1	

Provision of electricity							
Answer Options	Poor	Below average	Average	Above average	Excellent	Don't know	Response Count
Percentage	2,56%	5,13%	5,13%	41,03%	46,15%	0%	
Answer Options	Response Percent					Response Count	
Replace faulty/ old reticulation infrastructure incl. meters	20,0%					1	
Speed-up provision of electrical connections	0,0%					0	
Provide additional reticulation infrastructure	20,0%					1	
Enlarge capacity (to prevent outages)	0,0%					0	
Reduce price of electricity	80,0%					4	
Restoration of connections after outages	0,0%					0	
Other (please specify)	0,0%					0	

Provision of water							
Answer Options	Poor	Below average	Average	Above average	Excellent	Don't know	Response Count
Percentage	2,56%	5,13%	7,69%	48,72%	33,33%	2,56%	

WARD PLAN: WARD 6 – FOURTH GENERATION IDP 2017 - 2022

Answer Options	Response Percent	Response Count
Provide additional infrastructure	16,7%	1
Enlarge capacity (reservoirs or sources)	0,0%	0
Maintain infrastructure (Fix leaks and faulty meters)	33,3%	2
Speed-up provision of connections	0,0%	0
Improve water quality	0,0%	0
Reduce price of water	0,0%	0
Improve access to water / far from nearest tap	16,7%	1
Fix low water pressure	66,7%	4
Restoration after pipe bursts	0,0%	0
Other (please specify)	16,7%	1

Provision of sanitation							
Answer Options	Poor	Below average	Average	Above average	Excellent	Don't know	Response Count
Percentage	10,26%	5,13%	2,56%	30,77%	41,03%	7,69%	
Answer Options	Response Percent						Response Count
Provide flush toilets & necessary infrastructure	20,0%						1
Speed-up provision of connections	0,0%						0
Enlarge sewer plant capacity	0,0%						0
Maintain infrastructure (Fix blockages)	0,0%						0
Attend to bad odours	60,0%						3
Speedy clearance of blockages	20,0%						1
Reduce price for sewerage services	0,0%						0
Other (please specify)	20,0%						1

Refuse removal							
Answer Options	Poor	Below average	Average	Above average	Excellent	Don't know	Response Count
Percentage	0%	5,13%	7,69%	41,03%	41,03%	0%	
Answer Options	Response Percent						Response Count
Removing waste	0,0%						0
Cleaning and upkeep of street waste bins	0,0%						0
Provide more waste bins	0,0%						0
Combat illegal dumping	0,0%						0
Implement re-cycling	0,0%						0
Removal of garden waste	20,0%						1
Other (please specify)	100,0%						5

Recreational facilities and play parks							
Answer Options	Poor	Below average	Average	Above average	Excellent	Don't know	Response Count
Percentage	5,13%	7,69%	10,26%	15,38%	0%	61,54%	
Answer Options	Response Percent						Response Count
Provide additional sport fields	16,7%						1
Upgrade existing sport facilities	50,0%						3
Provide shade at sport fields (plant trees)	0,0%						0

WARD PLAN: WARD 6 – FOURTH GENERATION IDP 2017 - 2022

Relocate sport fields/ recreational facilities	0,0%	0
Clean and maintain sport fields	0,0%	0
Provide and maintain recreational equipment for children	0,0%	0
Make play parks safe for children	16,7%	1
Clean and maintain play parks	0,0%	0
Maintenance of municipal swimming pool	0,0%	0
Cleanliness of municipal swimming pool	0,0%	0
Other (please specify)	50,0%	3

Resorts: Caravan parks / Camping sites

Answer Options	Poor	Below average	Average	Above average	Excellent	Don't know	Response Count
Percentage	7,69%	7,69%	10,26%	25,64%	15,38%	33,33%	
Answer Options	Response Percent					Response Count	
Keep terrain and buildings clean and tidy	75,0%					6	
Maintain ablution facilities	62,5%					5	
Provide security	12,5%					1	
Provide shade and landscape facility	0,0%					0	
Other (please specify)	25,0%					2	

Beautification (Open spaces/ Cemeteries / Streets)

Answer Options	Poor	Below average	Average	Above average	Excellent	Don't know	Response Count
Percentage	7,69%	5,13%	20,51%	25,64%	7,69%	33,33%	
Answer Options	Response Percent					Response Count	
Clean and maintain Open Spaces	63,6%					7	
Clean and maintain cemeteries	45,5%					5	
Provide and maintain garden furniture (benches & bins)	9,1%					1	
Plant trees and shrubs (landscape) cemeteries	9,1%					1	
Plant trees and shrubs (landscape) along streets	0,0%					0	
Clean and Maintain municipal buildings and infrastructure	9,1%					1	
Other (please specify)	9,1%					1	

Libraries, Museums and Municipal buildings

Answer Options	Poor	Below average	Average	Above average	Excellent	Don't know	Response Count
Percentage	0%	0%	5,13%	30,77%	35,90%	28,21%	

Traffic services

Answer Options	Poor	Below average	Average	Above average	Excellent	Don't know	Response Count
Percentage	7,69%	5,13%	12,82%	35,90%	28,21%	10,26%	
Answer Options	Response Percent					Response Count	
Improve vehicle registrations and licencing	30,0%					3	
Improve efficiency of vehicle licence renewals	0,0%					0	
More visible patrolling	20,0%					2	
Control those who speed / drive recklessly	40,0%					4	

WARD PLAN: WARD 6 – FOURTH GENERATION IDP 2017 - 2022

More friendly service	0,0%	0
Improve road-side support	0,0%	0
Other (please specify)	30,0%	3

Emergency services							
Answer Options	Poor	Below average	Average	Above average	Excellent	Don't know	Response Count
Percentage	0%	5,13%	2,56%	23,08%	23,08%	46,15%	
Answer Options	Response Percent					Response Count	
Improve availability	100,0%					2	
Improve reaction times	50,0%					1	
Improve training of emergency staff	0,0%					0	
Improve support during emergencies	50,0%					1	
Other (please specify)	0,0%					0	

Building Plan Approval and Control							
Answer Options	Poor	Below average	Average	Above average	Excellent	Don't know	Response Count
Percentage	5,13%	2,56%	10,26%	20,51%	12,82%	48,72%	
Answer Options	Response Percent					Response Count	
Shorten time taken to approve building plans	66,7%					4	
Undertake compliance inspections of completed buildings	0,0%					0	
Improve awareness of requirements to submit building plans	0,0%					0	
Improve awareness of procedure to submit building plan applications	0,0%					0	
Improve access to status of applications	16,7%					1	
Other (please specify)	16,7%					1	

Land Use Planning and Control							
Answer Options	Poor	Below average	Average	Above average	Excellent	Don't know	Response Count
Percentage	0%	0%	0%	25,64%	7,69%	66,67%	

Administration and communication							
Answer Options	Poor	Below average	Average	Above average	Excellent	Don't know	Response Count
Percentage	12,82%	2,56%	2,56%	46,15%	25,64%	10,26%	
Answer Options	Response Percent					Response Count	
Improve response to general enquiries	85,7%					6	
Improve communication with the public	57,1%					4	
Improve financial administration	28,6%					2	
Improve skills to solve account queries	57,1%					4	
Improve internal communication	57,1%					4	
Alleviate financial burden of unemployed debtors	0,0%					0	
Ward councillor does not serve the community	42,9%					3	
Improve the effectiveness of ward councillors	57,1%					4	
Other (please specify)	14,3%					1	

Municipal staff

Answer Options	Poor	Below average	Average	Above average	Excellent	Don't know	Response Count
Percentage	7,69%	0%	7,69%	46,15%	38,46%	0%	
Answer Options	Response Percent					Response Count	
Improve telephone etiquette	0,0%					0	
Improve friendliness	0,0%					0	
Improve helpfulness	80,0%					4	
Improve skills	0,0%					0	
Improve respectfulness	0,0%					0	
Improve knowledge (related to municipality and its functions)	0,0%					0	
Other (please specify)	20,0%					1	

Indicate your preferred mode of communication

Answer Options	Response Percent	Response Count
Staff member at Office	7,7%	3
Public meetings	2,6%	1
Community Development Workers	0,0%	0
Pamphlets and newsletters	41,0%	16
SMS	20,5%	8
Local Newspapers	2,6%	1
Municipal Accounts	20,5%	8
Municipal Website	2,6%	1
Social Media (Facebook, Twitter)	2,6%	1
Other (please specify)	0,0%	0

Housing

Answer Options	Poor	Below average	Average	Above average	Excellent	Don't know	Response Count
Percentage	10,26%	5,13%	7,69%	25,64%	5,13%	46,15%	
Answer Options	Response Percent					Response Count	
Provide more housing for low income families	100,0%					9	
Support residents to fix badly built subsidized (before 1996) houses	22,2%					2	
Provide more GAP housing	11,1%					1	
Too few rooms	0,0%					0	
Provide ablution facilities	0,0%					0	
Other (please specify)	0,0%					0	

SMME/Local Economic Development

Answer Options	Poor	Below average	Average	Above average	Excellent	Don't know	Response Count
Percentage	2,56%	12,82%	7,69%	5,13%	2,56%	69,23%	
Answer Options	Response Percent					Response Count	
Provide land for emerging farmers	22,2%					2	
Facilitate partnerships with commercial farmers	22,2%					2	

WARD PLAN: WARD 6 – FOURTH GENERATION IDP 2017 - 2022

Provide trading stalls	11,1%	1
Property tax rebates for small businesses	0,0%	0
Provide beehives for small manufacturing enterprises	11,1%	1
Provide technical support	0,0%	0
Provide infrastructure for fishermen (slipway)	44,4%	4
Assist fishermen with acquisition of equipment/boats	88,9%	8
Other (please specify)	0,0%	0

Unemployment

Answer Options	Poor	Below average	Average	Above average	Excellent	Don't know	Response Count
Percentage	20,51%	15,38%	17,95%	10,26%	0%	35,90%	

Answer Options	Response Percent	Response Count
Provide more jobs	94,7%	18
Provide/Support skills development programmes	47,4%	9
Provide/Support adult education	42,1%	8
Other (please specify)	0,0%	0

Education

Answer Options	Poor	Below average	Average	Above average	Excellent	Don't know	Response Count
Percentage	2,56%	5,13%	0%	28,21%	23,08%	41,03%	

Answer Options	Response Percent	Response Count
Improve access to education	66,7%	2
Support maintenance of educational facilities	66,7%	2
Provide financial assistance to educational institutions	100,0%	3
Provide after school care facilities	33,3%	1
Other (please specify)	0,0%	0

Health issues

Answer Options	Poor	Below average	Average	Above average	Excellent	Don't know	Response Count
Percentage	15,38%	2,56%	10,26%	25,64%	5,13%	41,03%	

Answer Options	Response Percent	Response Count
Provide buildings for clinics	30,0%	3
Employ more health care staff	20,0%	2
Inspect fresh food outlets more regularly	0,0%	0
Apply health regulations	0,0%	0
Improve service at health facilities	60,0%	6
Vaccinate/sterilize stray animals	10,0%	1
Other (please specify)	20,0%	2

Crèche

Answer Options	Poor	Below average	Average	Above average	Excellent	Don't know	Response Count
Percentage	0%	2,56%	0%	20,51%	7,69%	69,23%	

WARD PLAN: WARD 6 – FOURTH GENERATION IDP 2017 - 2022

Answer Options	Response Percent	Response Count
Provide buildings for local crèches	100,0%	1
Provide training and enrichment programmes	0,0%	0
Support local crèches with educational materials	0,0%	0
Other (please specify)	0,0%	0

Youth development

Answer Options	Poor	Below average	Average	Above average	Excellent	Don't know	Response Count
Percentage	17,95%	7,69%	12,82%	17,95%	2,56%	41,03%	

Answer Options	Response Percent	Response Count
Provide / Support youth development programmes	53,3%	8
Provide employment	86,7%	13
Provide social health programmes	46,7%	7
Combat drug and substance abuse	73,3%	11
Provide sport and recreation facilities	20,0%	3
Employ a youth coordinator	26,7%	4
Other (please specify)	0,0%	0

Sport development

Answer Options	Poor	Below average	Average	Above average	Excellent	Don't know	Response Count
Percentage	7,69%	0%	0%	20,51%	2,56%	69,23%	

Answer Options	Response Percent	Response Count
Provide/support sport development programmes	75,0%	3
Support local sport clubs	25,0%	1
Encourage recreational sport	50,0%	2
Other (please specify)	0,0%	0

Tourism development

Answer Options	Poor	Below average	Average	Above average	Excellent	Don't know	Response Count
Percentage	5,13%	0%	12,82%	25,64%	28,21%	28,21%	

Answer Options	Response Percent	Response Count
Promote the tourism sector	83,3%	5
Support local tourism organizations	16,7%	1
Assist initiatives to generate jobs in the hospitality sector	16,7%	1
Improve signage	0,0%	0
Enhance celebration of heritage (all aspects)	16,7%	1
Efficiency and helpfulness of Tourism Information Bureaus.	16,7%	1
Other (please specify)	0,0%	0

Which ONE of the following is the most important service that the Local Council must attend to in the next five years?

Answer Options	Response Percent	Response Count
Economic development / Job creation	41,0%	16

WARD PLAN: WARD 6 – FOURTH GENERATION IDP 2017 - 2022

Housing for low income families (subsidized housing)	10,3%	4
Gap Housing (family earning between R4000 - R15000 per month)	0,0%	0
Roads and storm water	25,6%	10
Electricity	2,6%	1
Potable water	2,6%	1
Sewerage	17,9%	7
Refuse removal	0,0%	0

Which ONE of the following is the most important service that Provincial and National Government must to attend to in the next five years?

	Response Percent	Response Count
Education	12,8%	5
Crime / Safety and Security	41,0%	16
Economic Development / Job Creation	33,3%	13
Sports	0,0%	0
Health	7,7%	3
Support to Emerging Farmers	0,0%	0
Support access to fishing quotas	5,1%	2

7.6.10 NEEDS IDENTIFIED BY WARD 6 FOR THE FOURTH GENERATION IDP

COMMUNITY DEVELOPMENTAL NEEDS IDENTIFIED AND ADDRESSED			
FINANCIAL SERVICES	CORPORATE SERVICES	TECHNICAL SERVICES	OFFICE OF THE MUNICIPAL MANAGER
Households receive indigent grants (Can't be quantified per ward)	Indigenous sport program in Aurora	Storm water- plan for Velddrif	Golden Games
Payment rate Noordhoek 95,09 %, Aurora 95,64 % and Dwarskersbos 100,84 %	Animal clinic visits 4 - Velddrif and 3 Aurora	"Potholes" in especially Church street	Climate change plan
	Electronic system in libraries, shelves, computers, air conditioning	Weigh bridge in Velddrif	Thusong program
	Library programme	"Landfill site" in Velddrif rehabilitated	Premises and funding needed for informal traders
	Develop "Precinct plan"	"Recycling"	E-Centre in Noordhoek
	Law enforcement – Patrolling, road blocks, preschool education, contract	Housing 107 in Noordhoek	
	Uniform zoning scheme	Electricity network renewals	
		Pavements	
		Water - boreholes in Aurora (R 320 000)	
		Roads reseal and new roads	
		Replace conventional meters with "pre-paid"	
		Sewerage Aurora (R 2,9 mil) and Velddrif (R 69 m)	
COMMUNITY DEVELOPMENTAL NEEDS IDENTIFIED, BUT NOT YET ADDRESSED			

FINANCIAL SERVICES	CORPORATE SERVICES	TECHNICAL SERVICES	OFFICE OF THE MUNICIPAL MANAGER
	Energy saving mechanisms in Dwarskersbos caravan park	Aurora speed calming	Survey of SMME's
	BTO programme	Irrigation of parks	Youth survey
	Improve law enforcement	Storm water in Noordhoek and Aurora	Climate change plan
	Disaster management	Aurora – map at entrance of town	MOU with WCBDC
	Upgrade ablution in Dwarskersbos resort	Street lights Primrose Street	Implementation of "precinct plan"
	Control of traffic in Dwarskersbos	Upgrade old cemetery in Noordhoek	Land for small farmers
	"Signage" on beaches	Swimming pool in Noordhoek	"Local Drug Action Committee"
	Regulations on fire-works in Dwarskersbos	Play park in Noordhoek inadequate	Tuk- tuks
	Speed calming in Falken street	Beautification of Aurora	
	Public toilets (Identifying of land)	Street lights in Trewal street	
	Replace stop signs in Aurora	Awareness of recycling of waste	
		Reseal roads in Noordhoek	
		Public toilets	
		Noordhoek community hall- equipment and new chairs	
		Cleaning of cemetery in Aurora	
		Control over "dumpsite" in Aurora	
		Fees for dumping too high	
NEW COMMUNITY DEVELOPMENTAL NEEDS IDENTIFIED			
FINANCIAL SERVICES	CORPORATE SERVICES	TECHNICAL SERVICES	OFFICE OF THE MUNICIPAL MANAGER
	Noordhoek - Pelican beach resort - expect info	Aurora – Lightning in Hoof street to RDP house	Noordhoek – job creation
	Noordhoek – land for churches	Aurora – monitoring and control at landfill	Agriculture develop-ment of small farmers in Noordhoek
	Aurora – stop signs must be replaced	Aurora - housing (Waiting lists?)	Programme for "school drop outs"
		Aurora – Storm water channels unfinished	
		Aurora – old land fill sites need urgent attention	
		Aurora – Cement water channels in Hoof street & change to speed calming	
		Water security (awareness of savings)	
		Transfers of homes in Hoog street	
		Noordhoek – Upgrading of parking area at Noordhoek school	

		Noordhoek – play park in "Oublok"	
		Cleaning of Noordhoek immediately	
		Noordhoek – flood lights in vlei area	
		Noordhoek – benches and "walkways" at "Die mond"	
		Noordhoek - Solar geysers	
		Rehabilitation of "riolkanaal_ Watsonia/ Nerina street	
		Noordhoek – street lights in Roos street	
		Noordhoek - "Vibracrete" wall in Albatros lane to stop sand	
		Noordhoek - GAP housing	
		Noordhoek – fixing of "potholes"	
		Noordhoek – widen Watsonia str on 90*turn and Albatros str	
		Noordhoek – entrance road on NW-side	
		Noordhoek – pavements	
		Noordhoek – 1 seater for events	
		Beautification on entrances into Noordhoek	
		Noordhoek – upgrade of road to school	
		"mesh fencing" around Noordhoek graveyard	
		A Green park in Noordhoek	
		Dwarskersbos – welcoming signs on both sides	
		Dwarskersbos – maintenance of "boardwalks"	
		Dwarskersbos home owners frustrated with long period of approval of building plans	
		Dwarskersbos irrigation of sport grounds – water that runs away	
OTHER GOVERNMENT DEPARTMENTS			
DEPARTMENT OF EDUCATION	DEPARTMENT OF HEALTH	DEPARTMENT SOCIAL SERVICES	DEPARTMENT HUMAN SETTLEMENT
Noordhoek – amalgamation of schools – 1 primary and 1 secondary school	Extension of clinic & wheelchair friendly	Retirement home	Housing
Programme for "school drop outs"			Outside toilets in Oublok to inside Noordhoek
Xhosa primary school			

7.6.11 BUDGET & CAPITAL PROGRAMME: 2017/18 – 2019/2020

This section outlines the budgetary provision for Ward 6. It should be noted that a single amount is being budgeted for the development of streets, pavements and street lights. Once the budget has been approved in May 2017, the Directorate Technical Services will develop an annual programme for pavements, streets and street lights in each ward. This draft programme will be communicated with the ward committees as to ensure that the needs as expressed by the community on where these infrastructure needs to be developed, are aligned. This programme will then be worked into the ward plan.

The following is the capital programme for Ward 6:

Dept Description	PROJECT_OWN_DESCRIPTION	WYK	Requested BUD1819	Requested Funding 2018/19	Requested BUD1920	Requested Funding 2019/20	Requested BUD2021	Requested Funding 2020/21
Solid Waste Removal	Refuse collection point (RH/DKB/EK)	5,6		el		el	1 900 000	el
Solid Waste Removal	Weighbridge (VD,PV)	1,2,6,7				el		
Solid Waste Removal	Fence at Transfer Station	6,7	250 000	cr	250 000	cr	250 000	cr
Sewerage	Replace rising mains in pump stations	6,7	150 000	cr	200 000	cr	200 000	cr
Sewerage	Fencing Sewer Pump Stations	6,7	60 000	cr	100 000	cr	250 000	cr
Sewerage	New Vacuum Tanker Truck	6,7					1 000 000	el
Sewerage	Switchgear and pumps	6,7	120 000	cr	200 000	cr	200 000	cr
Sewerage	Telemetry at pump stations	6,7	150 000	cr	150 000	cr	150 000	cr
Sewerage	Sewerage stand by pumps	6,7	180 000	cr	40 000	cr	250 000	cr
Sewerage	VD Pumphline	6		mig	2 554 064	mig		mig
Waste Water Treatment	Security at WWTW	6,7	50 000	cr	50 000	cr		
Waste Water Treatment	Roof at Inlet Works (Green Drop requirements)	6,7	30 000	cr			300 000	cr
Waste Water Treatment	Basket screens for pumpstations	6,7		cr		cr		
Sports Grounds and Stadiums	Borehole for irrigation	6		cr	300 000	cr		

WARD PLAN: WARD 6 – FOURTH GENERATION IDP 2017 - 2022

Dept Description	PROJECT_OW_N_ DESCRIPTION	WYK	Requested BUD1819	Requested Funding 2018/19	Requested BUD1920	Requested Funding 2019/20	Requested BUD2021	Requested Funding 2020/21
Holiday Resorts	Sound System for Beach Resorts	6,7		cr	15 000	cr	30 000	cr
Holiday Resorts	Paving at ablution facilities at Beach Resorts	6,7	10 000	cr				
Holiday Resorts	Recreational Equipment (Games)	6,7		cr	50 000	cr	50 000	cr
Holiday Resorts	Furniture & Equipment - Holiday Resorts	6,7	100 000	cr	300 000	cr	250 000	cr
Holiday Resorts	Replace Cupboards of chalets at Beach Resorts	6,7	50 000	cr	50 000	cr		
Holiday Resorts	Upgrading of ablution blocks at resorts	6,7	270 000	cr	150 000	cr	200 000	cr
Holiday Resorts	Full Height Double Turnstile	6		cr	120 000	cr	150 000	cr
Water Treatment	Purchase new borehole pumps	6	50 000	cr	50 000	cr		
Water Treatment	Refurbish boreholes (Rooigat)	6		cr	150 000	cr		
Roads	Chemical sprayer mounted on LDV	6,7		cr	100 000	cr	100 000	cr
Roads	Construction of roads: RDP Houses	4-6	350 000	el	300 000	el	300 000	el
Roads	Pave sidewalks (PV - 150 & VD - 200)	1,2,6,7	350 000	cr	400 000	cr	450 000	cr
Roads	Reseal/Construction of streets	6	600 000	el				
Electricity	Mid block lines	6,7		cr	340 000	cr	400 000	cr
Electricity	Low Cost Housing (Laaipleke Sandlelie - Rollover)	6				doe		
Electricity	Larger HT Switches - standby battery cell	6,7	70 000	cr				

WARD PLAN: WARD 6 – FOURTH GENERATION IDP 2017 - 2022

Capital Items	Description		2018/19	2019/20	2020/21
Job creation: EPWP and CWP					
EPWP: Infrastructure	Repair water leakages at HOP Households		40 000		
EPWP: Waste Management	Street cleaning		70 000		
EPWP: Waste Management	Refuse Pickers		65 000		
EPWP: Community Safety	Traffic and Law Enforcement - Full amount for Bergrivier Municipality		180 000		
EPWP: Community Safety	Fire Services and Disaster Management		159 000		
Ward projects					
Grade 12 project	Grade 12 project linked to Youth Cafe		Still to be determined		
Reducing alien vegetation	Reducing alien vegetation in Dwarskersbos				
Identification of workers	Identification of workers/contractors in Dwarskersbos				
Department of Transport					
Redelinghuys – Elandsbaai resealing	Project cost R 90 000 000		x	x	
Redelinghuys/Aurora	Regravel				
Department of Health					
Velddrif clinic					

7.6.12 EMERGENCY NUMBERS AND OTHER CONTACT DETAILS

WARD 6	Councillor Audrey Small
	Cell 081 073 9918, email smalls@bergmun.org.za ,
	Office 022 913 1390
SAPS Laaiplek	022 783 8022
Ambulance Vredenburg	022 713 4590
Velldrif Clinic	022 783 0971
Aurora Clinic	022 952 1800
Fire Department	083 272 4129/10177
Municipality Aurora office	022 952 1720
Municipality Velldrif office	022 783 1112
Counselling office	
Dept of Social Services - Aurora	022 913 1156 or SAPS
Schools –Aurora High School	022 952 1660
Noordhoek Primary School	022 783 0481
EMERGENCY	10177